



"DICERO" hard coat films



Key features of the product

1. Highly transparent and high quality hard coat films
2. Diversified range of base materials such as PET and isotropic films
3. Grade in combination with adhesive layer is available.

DICERO is a hard coat film of high transparency and high quality. The thickness of the base material can be controlled from 50 to 188 μ . Moreover, the types of base materials include not only PET but also grades of polycarbonate with good optical isotropy and acryl, as well as materials with adhesive on one side.

Solutions for our clients

We are the top maker of diffusion films for LCDs. We have advanced optical technology and production technology that meet rigorous quality standards, and provide high quality products. The hard coat films are heavily used in the field of touch panels, and often used with LCDs at the same time. PET-based general products cause the problem of Moire patterns when looking through polarized sunglasses. Our isotropic film-based hard coat films have solved such optical problems.

KEIWA Incorporated

<http://www.keiwa.co.jp/> [English](#)
1-2-5, Kamishinjo, Higashiyodogawa-ku, Osaka City, Osaka

ISO 9001
ISO 14001



"adpack" volatile corrosion inhibitor paper (Anti-corrosion paper)



Key features of the product

1. Changes rust prevention processing from anti-corrosion oil.
2. Easily protects products from rust at a low cost.
3. Rust prevention power that is stronger than rust prevention film

When metal products are wrapped or sealed in container boxes and plastic bags with "adpack," they are protected against rust. The paper enables metal products to be used as they are without cleaning after they are unpacked. After use, "adpack" can be disposed of just as paper.

Solutions for our clients

We have "40 years of experience dealing with anti-corrosion paper." Our product "adpack" has established trust and results with more than 2,500 customers including major steel manufacturers, automobile makers and machine tool companies.

In hot and humid Asian regions such as Japan, the volatile anti-corrosion paper can easily prevent rust that can cause big troubles, and thus greatly helps customers.

At present, we have sales agents in China (Shanghai), Taiwan, South Korea, Singapore, Thailand, Malaysia and India.

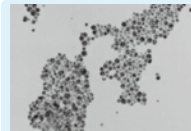
ADCOAT CO., LTD.

<http://www.adpack.jp> [English](#)
1-25-14, Hishie, Higashiosaka City, Osaka

ISO 9001



Manufacturing nano-size metal particles



Key features of the product

1. Commercialize metal particles 10 nm in diameter.
2. Can synthesize large quantities via liquid phase synthesis.
3. Nano-particles make low-temperature firing possible.

We have succeeded in producing these nano-particles based on a proprietary liquid phase particle manufacturing process, which was developed jointly with the Osaka Municipal Technical Research Institute. Metals, from which we can produce nano-particles, include silver, gold, and copper. Nano-size metal particles are expected to pave the way for high density electrodes, joining via alternative solder metals, and water-free processes using the particles as alternatives for plating.

Solutions for our clients

We have manufactured and marketed metallic paste for firing electrodes and plating solution. There is increasing demand for micro wiring for electrodes, and the paste using these nano-size metal particles are suitable for such wiring. With the widespread use of hybrid vehicles and electric vehicles, nano-size metal particles are attracting attention in applications for joining high current electrodes. Studies into nano-particle paste has been under way for some time. Moreover, because coating films made with these nano-particles have a texture that is close to plating, it is possible to make the plating process water-free.

DAIKEN CHEMICAL CO., LTD.

<http://www.daiken-chem.co.jp/> [English](#) / [中文](#)
2-7-19, Hanatennishi, Jyoto-ku, Osaka City, Osaka

ISO 9001
ISO 14001



"Hirose hooks" (hooks of sewing machine)



Key features of the product

1. Top quality
2. Quick delivery
3. Reasonable price

The "hook" of sewing machine is the part that stores the bobbin around which bobbin thread is wound. The hook catches the needle thread supplied from the needle, and, when going around to make a loop of the needle thread, passes the bobbin thread stored in the hook through the loop to create a stitch. Namely, the hook is the most important part of a sewing machine.

Solutions for our clients

We have provided more than 1,000 kinds of Hirose hooks suitable for all kinds of sewing machines used for sewing thin to heavy cloth, including no-oil-supply hooks (that eliminate oil spots on yarn and cloth) and tip-strengthened hooks (that reduce the damage to the hook tip by the needle). Moreover, we have conducted a study of "diamond-like carbon" via academic-industrial cooperation, and have succeeded in producing "durable hooks" that increase durability. Not only our accumulated technology but also our advanced processing technology, surface polishing technology and advanced dimensional accuracy are highly rated around the world.

HIROSE MFG. CO., LTD.

<http://www.hirosemfg.co.jp/> [中文](#)
4-5-12, Tsukuda, Nishiyodogawa-ku, Osaka City, Osaka

ISO 9001

Good planning capability One-of-a-kind technology Made in Japan Trial production possible Mass-production possible

CONTACT: Osaka Core Manufacturing Technology Network (Detailed information: P13) E-mail : monob2b@mydome.jp



Woolen products using high quality materials including cashmere, angora, and wool

J



Key features of the product

1. Originally-planned products that make use of the features of materials
2. Production by equipment and processes most suitable for texture
3. Quality control based on integrated production starting from materials

Cashmere products made by raising machines equipped with teasel that has soft intricate thorns. These have top quality with good texture and surface touch, which cannot be produced by raising machines equipped with artificial metal needles. These cashmere products are extensively used for coats and jackets.

Solutions for our clients

By adding ingenuity to time-honored techniques and skills, we produce woolen products using cashmere and other high quality materials. We have an integrated production system comprised of spinning, weaving, dyeing and finishing, and have acquired ISO9001 and ISO14001 certifications. Moreover, as a company that has been accredited as producing the world's top brand products, we have obtained admission to the Cashmere and Camel Hair Manufacturers Institute (CCMI). With the aim to improve the quality and productivity of woolen yarn that are the basis of products, we have established a spinning plant equipped with advanced production facilities and control system. We can constantly and stably provide top quality products to customers.

FUKAKI WOOLLEN TEXTILE CO., LTD. <http://www.fukaki.co.jp> Japanese only
3-7-1, Itahara-cho, Izumiotsu City, Osaka

ISO 9001
ISO 14001



"Domestic knit" (Planning, manufacturing and sales)

G J

T M



Key features of the product

1. Thorough quality control based on ISO9001
2. Visualization based on one-floor line control
3. Reduction of indirect costs by higher working efficiency

With an integrated production system based on one-floor self-manufacture, we pursue further quality improvements and control of each process in conformity with ISO9001. Moreover, visualization based on line control improves working efficiency and reduces indirect costs. Thus, we can provide high quality products at low costs.

Solutions for our clients

We have our own designers and patterners, and not only make OEM products but plan, manufacture and market some 800 models of original products yearly. Moreover, with the receipt of proposals and orders for OEM products as an axis, we promote in-house self-manufacture on a single floor and thoroughly control quality in each process. Thus, we can reduce product losses and indirect costs in each process, and can provide high quality "domestic knit" at low costs to customers.

ISOPE CO., LTD. <http://www.isotopegroup.com> Japanese only
1-5-19, Ikeura-cho, Izumiotsu City, Osaka

ISO 9001



Special printing mechanical equipment and its technology

O



Key features of the product

1. Good inexpensive products that are immediately available
2. Can print on all kinds of materials except water and air.
3. Offer one-stop services for various surface decoration.

Since the founding of the company, we have strived to print on all kinds of materials except water and air for 45 years. Our mechanical equipment was first used for insoles of shoes, and since then, we have provided mechanical equipment that prints (decorates) characters and designs on all kinds of products including consumer electronics, automobiles, cosmetic containers and miscellaneous daily goods.

Solutions for our clients

Because we can handle various kinds of special printing methods all on our own, we can propose the best methods and lineups of equipment and peripherals to meet customer demands. Regarding peripherals, we can supply printing pretreatment equipment, inks and films required for printing, as well as quality inspection equipment for post-printing controls. As a so-called "one-stop shop for first-surface decoration", we have established a system to meet customer demand.

NAVITAS CO., LTD. <http://www.navitas.co.jp> Japanese only
9-1, Ishizukitamachi, Sakai-ku, Sakai City, Osaka

ISO 9001
ISO 14001



Paper tubes and paper tube manufacturing equipment

G J

T M



Key features of the product

1. Top quality and technology cultivated over 100 years of experience
2. Various paper tubes available
3. Earth-friendly products

We produce various kinds of paper tubes for films and fibers, as well as small caliber paper tubes. Moreover, we provide paper reels made of recycled paper and water-soluble paper tubes in order to deal with environmental problems, as well as composite core paper tubes that combine paper tubes of different inside diameters for special purposes.

Solutions for our clients

We have developed paper tubes for textile markets since the foundation of the company in 1911. Over the years, we have also developed original paper tube finishing equipment. Based on the technologies and know-how that we cultivated over 100 years of experience, we have exported our technologies to South Korea, India and other countries overseas. We can provide paper tubes that satisfy various specifications according to customer needs. Moreover, making use of our finishing equipment, we can enter into tie-ups with textile makers and paper tube makers that produce paper tubes for synthetic fiber.

TANAKA PAPER TUBE CO., LTD. <http://www.tanakapt.co.jp> English
6-88, Oihara, Yao City, Osaka

ISO 14001

Good planning capability

One-of-a-kind technology

Made in Japan

Trial production possible

Mass-production possible



One-stop solution for web and print media



Key features of the product

1. Anyone can easily publish books.
2. No storage of books is required. Casebound books can be made, starting from lots of just one book.
3. One stop from bookmaking to sales of electronic books

We provide one-stop solutions based on the merger of cutting-edge IT technology and automatic formatting and printing technology. We handle the book publication flow of "manufacture -> publication -> exhibition -> sales -> delivery" entirely online. Anyone can easily enjoy publishing and selling books themselves. Customers can even develop a personal publishing business.

Solutions for our clients

Even though people want to publish books, making numerous books is expensive, and it is difficult to make books in lots of just one book. Our one-stop solution service has solved such problems. Anyone can easily publish books and electronic books, and we can make customer dreams of "wanting to make books" a reality.

Structure of the one-stop solution /

■ Bookmaking site: SymBook [Easy publication] (<http://www.symbook.jp/>)

■ Sales site: SymStore [Easy net bookstore] (<http://www.symbook.jp/>)

FIT CO., LTD. <http://www.fit2001.com/> Japanese only
PopTown Main Bldg., 1-2-10, Akai, Daito City, Osaka



One-tuft brushes



Key features of the product

1. Made with super slim tapered bristles.
2. Enable plaque control in difficult-to-reach locations.
3. Facilitate brushing of back teeth.

Our original one-tuft toothbrushes were created through joint development with dentists. The proprietary conically-shaped brushes enable users to securely apply the tip of bristles to locations where they want to remove trapped foods and thus they can easily remove plaque.

Solutions for our clients

The one-tuft brushes enable users to easily brush back teeth and other locations where complete brushing and plaque control are difficult. With the use of super slim tapered bristles, the conically-shaped brushes, which are cut like ink brushes, deliver a softer brushing touch. Moreover, before commercialization, we developed an implanting machine that applies heat welding to nylon bristles and a cutting machine that rounds the tips of the bristles, and, thus, have realized prices of the same level as normal toothbrushes.

LAPIS CO., LTD. <http://lapis21.com/> Japanese only
2-33-13, Obata-cho, Yao City, Osaka

ISO 9001



R40 series - Deodorant care pillows



Key features of the product

1. Low-elasticity of 9.6 newton
2. 96% removal by adsorption of body odor components
3. Containing activated charcoal of superior hygroscopic property

This pillow uses low-elasticity foam of 9.6 newton, which is up to 5 times bigger than commercialized low-elasticity foam pillows. Moreover, because the activated charcoal contained in low-elasticity foam exhibits both a superior deodorization power that enables 96% removal by adsorption of body odor components and a moisture absorption power that absorbs perspiration while sleeping, users can enjoy a comfortable feeling in bed.

Solutions for our clients

Low-elasticity foam material that contains activated charcoal and has a low-elasticity of 9.6 newton is used for the pillow. The low-elasticity foam material, which brings elasticity close to zero, supports dispersed body pressures with a flexibility that even follows the form of individual hair and, thus, can provide incomparable usability to users. Moreover, because the activated charcoal contained in foam exhibits both a superior deodorization power that enables 96% removal by adsorption of nonenal (body odor component), 99% isovaleric acid, 98% acetic acid and 86% ammonia, and a moisture absorption power that quickly absorbs perspiration while sleeping, users can enjoy a comfortable feeling in bed.

TAKASHIMA Inc. <http://www.takasima.co.jp> Japanese only
Takatsuki FJY Bldg., 5F, 1-5-25 Jyohoku-cho, Takatsuki City, Osaka



From industrial protectors to athletic sunglasses



Key features of the product

1. From polarized sunglasses to laser protective eyewear
2. Various surface treatment technologies such as anti-fog.
3. Ergonomic design

We have experiences in light control for 100 years and our products are extensively used in a variety of fields, from industrial protective equipment including laser protective eyewear to sunglasses for sports. Making full use of our proprietary surface treatment technologies, we provide high value-added products such as hard coated lens and hydrophobic lens.

Solutions for our clients

We manufacture and market industrial protectors and sporting goods. For 100 years since the founding of the company, we have dealt with the issue of "eye protection." We have a large market share for industrial protectors used at manufacturing sites, as well as sporting goods such as swimming goggles and sunglasses. We manufacture products through an integrated in-house production system that spans from design to manufacture and sales. In particular, our laser protective eyewear, injection molded polarized lens and surface treatment technology such as hard coating are something beyond comparison.

YAMAMOTO KOGAKU CO., LTD. <http://www.yamamoto-kogaku.co.jp/> English
3-25-8, Chodo, Higashiosaka City, Osaka

ISO 9001

Good planning capability One-of-a-kind technology Made in Japan Trial production possible Mass-production possible

CONTACT: Osaka Core Manufacturing Technology Network (Detailed information: P13) E-mail : monob2b@mydome.jp



FL-5600 low safety bed



Key features of the product

1. Eliminate the risk of patients being caught.
2. Reduce pressure when rising the back panel with drop seat and swing back system.
3. Safe low-voltage 24V electric equipment system

The beds ensure safety, comfort, and functionality, which are demanded for medical beds of inpatient centers. The beds also meet the practical needs of nurses and caregivers. In consideration of the hygiene required in medical practice, an antibacterial coating is applied to the beds.

Solutions for our clients

Medical institutions can widely use the beds regardless of acute or chronic stage conditions, and can improve the safety and comfort of treatment environments. Moreover, the beds can be extensively used in facilities where persons need physical therapy, such as facilities for elderly people, people with disabilities, and people requiring nurse attention. These beds eliminate the risk of the patient being caught in the side rail, which should be avoided in medical practice. Moreover, the beds take usability in medical practice into consideration with large-size casters for good transport and our electronic system has been designed to cut the electromagnetic wave for avoiding the interfering the other medical equipments.

SEAHONENCE Inc. <http://www.seahonence.co.jp/> [English](#)
3-10-17, Fukaekita, Higashinari-ku, Osaka City, Osaka



Vehicle impact shock absorbers



Key features of the product

1. Vehicle center-of-mass acceleration at collision below 200 m/s²
2. Passenger head collision speed below 40 f/s
3. Partial exchange possible

Our impact absorbers for vehicles meet USA structural safety criteria (NCHRP-350) for expressways and the safety assessment standards for Japanese passengers, and thus have been used in all expressways in Japan. In the Tokyo Metropolitan Expressway, our products are highly evaluated for their safety and we have a 100% market share.

Solutions for our clients

We have developed vehicle impact shock absorbers that protect precious human lives from traffic accidents. In the Public Works Research Institute of the Ministry of Land, Infrastructure and Transport, we conducted full-scale crash tests at a speed of 100 km/h. The results show that our products meet safety installation standards in the USA and Japan. We have delivered products to the Ministry of Land, Infrastructure and Transport, NEXCO, Metropolitan Expressway, Hanshin Expressway, etc. and we can be consulted about the improvement of individual installations. Moreover, because we have enabled the replacement of parts as opposed to the replacement of entire products, we can greatly reduce repair costs after the occurrence of collisions.

NKC Co., Ltd. <http://www.nkcsp.co.jp/> [English](#)
4-27, Rinkuminamihama, Sennan City, Osaka



Doctor Pick (Toothpicks that do not damage teeth)



Key features of the product

1. Do not hurt teeth and gums.
2. Removal of plaque and massaging the gum possible
3. Recommended by dentists

The conventional round-shaped toothpicks were originally made for cooking, and portable triangular toothpicks suitable for interdental spaces are extensively used in Europe and the U.S. Making use of conventional materials (processed round wooden sticks), we have developed a machine for cutting the sticks into "interdental toothpicks" with the tip cut into a triangular shape that fits gently into interdental spaces. The toothpicks can be placed on dining tables, and simply and effectively used for care after meals.

Solutions for our clients

According to dental experts, conventional round toothpicks can damage teeth if used to remove plaque from interdental spaces after meals, thus triangular toothpicks are suitable for the purpose. Conventional triangular toothpicks are cut by forming tools and connected at the sides. Therefore, users need to break off one toothpick each time, and fibers are likely to remain as burrs, making them dissatisfying as products. Making use of conventional processed round wooden sticks, we have developed the world's first "interdental toothpick" -- called Doctor Pick -- with the tip cut into a triangle that fits gently into interdental spaces.

Koeisha & Co., Ltd. <http://www.cleardent.co.jp/> [English](#)
885-Uehara-cho, Kawachinagano City, Osaka



"pid" retractable indoor clothesline



Key features of the product

1. Clothesline wire can be retracted when not in use.
2. Capable of supporting up to 10kg of laundry weight.
3. Wire retracts into unit at safe gentle pace.

This convenient indoor clothesline occupies little space, as the laundry wire can be retracted into the unit when not in use. The wire, which extends to a distance of 3.6m, can be used for drying laundry of up to 10kg weight. This product received the Good Design Award from the Japan Institute of Design Promotion in 2009.

Solutions for our clients

An indoor clothesline is an ideal solution that solves many issues. Those who have no outdoor space for hanging out the laundry, those who do the laundry after coming home at night, those with pollen allergies, those who hang laundry indoors as a means of dealing with dry winter weather or rain, and those with large amounts of laundry can all benefit from this product. "pid" serves these needs whilst putting an emphasis on a clean and convenient living environment.

Morita Aluminum Industry, inc. <http://www.moritaalumi.co.jp/> [English](#)
530-1, Ozaki-cho, Hannan City, Osaka



Door handles and lever handles for architecture



Key features of the product

1. A wide variety of lineups
2. Thorough commitment to materials and finishing
3. Can accept various orders (special orders).

As an architectural hardware maker, we have a wide variety of lineups of door handles made of various kinds of materials, finishing, and designs. The door handles not only can match all kinds of spatial designs, but also are studied and developed based on our thorough commitment to user-friendly functions and shapes.

Solutions for our clients

Customers can select products from a wide variety of lineup according to applications and situations. For example, the lineups include products made of antibacterial materials to prevent hospital-acquired infections, products that hardly cause electrostatic shock, and products with rotating grips to lessen the burden on the wrist when opening a sliding door. Moreover, we can accept small-lot production and special orders, and can make one-of-a-kind products in accordance with customer demand.

UNION CORPORATION

<http://www.artunion.co.jp/> [English](#)
2-13-22, Minamihorie, Nishi-ku, Osaka City, Osaka



Takeyama recorder Maple series



Key features of the product

1. Refined, elegant tone
2. Balanced musical interval
3. Enables rich performance expression.

Recorders are delicate musical instruments completed through many difficult processes. We can provide high quality, stable recorders based on technologies we have cultivated over our 45 years of business. These recorders have realized elegant baroque tones and a comfortable light reaction to playing.

Solutions for our clients

High quality wooden recorders are musical instruments that are difficult to obtain because of high prices. Based on the design of our Bressan series used regularly by professional players, we have developed a maple series that is more affordable to players. This models are high quality recorder shown at reasonable prices, which are suitable for those who want to learn how to play a recorder and who want to play several kinds of musical instruments. Moreover, we can provide low-priced and high quality recorders overseas without being affected by foreign exchange rates.

TAKEYAMA RECORDER WORKSHOP

<http://www.takeyama-recorder.jp/> [Japanese only](#)
3-8-12, Anryu, Suminoe-ku, Osaka City, Osaka



LEGMAN (Height-adjustable table legs)



Key features of the product

1. Adjust the height only by lifting the top board.
2. Prevent sudden drops using a slowdown mechanism.
3. Load capacity is 1,000 kg (still vertical load).

There are a lot of people who use wheelchairs in elderly facilities. Because the arm rests of the wheelchair do not fit under the normal table height and thus prevent the user from moving closer to the table, it is desired that the table height can be easily adjusted. Therefore, we have developed the LEGMAN table legs for use in elderly facilities.

Solutions for our clients

The LEGMAN can be easily height-adjusted, and can be used in various situations as it has strong load carrying capacity. The table legs can be used not only for dining tables of welfare facilities, but for lab tables in educational facilities and workbenches in factories. The height of table legs can be adjusted according to the growth of children, the body shape of individuals and work style.

KOYO ENGINEERING CO., LTD.

<http://www.koyogear.com/> [English](#) / [中文](#)
1214, Kusabe, Nishi-ku, Sakai City, Osaka

ISO 9001



Manufacturing and restoration technology for Japanese traditional handicrafts



Key features of the product

1. Woodworking technology
2. Lacquer technology
3. Mercury amalgam plating technology

We have manufacturing and restoration technology for Japanese traditional handicrafts, and are engaged in the manufacture and restoration of religious tools such as miniature shrines and Buddhist altar fittings. We perform mercury amalgam plating in a completely closed workplace. Therefore, we can process products without worrying about the effects of environmental pollution.

Solutions for our clients

We can repair and restore cultural assets possessed by museums, etc. In particular, we have engineers who can perform mercury amalgam treatment. There are only a few of these engineers in the whole wide world. Based on these traditional technologies, we can reproduce cultural assets just as they were manufactured in old times.

Tanio Co., Ltd.

<http://www.sairei-tanio.com/> [Japanese only](#)
1081-1, Syukuno, Nose-cho, Toyono-gun, Osaka

Good planning capability One-of-a-kind technology Made in Japan Trial production possible Mass-production possible

CONTACT: Osaka Core Manufacturing Technology Network (Detailed information: P13) E-mail : monob2b@mydome.jp



"N-forme series" lockers for valuables



Key features of the product

1. Can provide custom-made products in addition to standard products.
2. Can change the size according to application.
3. Three types - self-standing type, desktop type, and wall type - are available.

Our lockers are designed to store valuables such as wallets, mobile phones, and notebook computers. Users can select either basic cylinder locks or password locks that can be used for an unspecified number of users. The standard size of one box is W186 x D310 x H140mm. The structure of one locker can be changed from one row and one tier to five rows and ten tiers.

Solutions for our clients

Our lockers are designed to store valuables of workers including part-timers at fast food shops, supermarkets and plants. Moreover, the lockers are used for a variety of applications at present, such as for storing notebook computers and mobile phones and for post-office boxes at universities in which academic reports submitted from students are temporally stored. They are all simple and high quality steel storage boxes. We can provide custom-made products according to the applications of customers and the things to be stored.

NIMBARI KOUSAKUSYO CO., LTD. <http://www.nimbari.co.jp> Japanese only

3-14-6, Mizuhai, Higashiosaka City, Osaka

ISO 9001



iPad2 Hard Case



Key features of the product

1. Thin and strong
2. Stylish
3. Can carrying iPad2 inside.

The hard case can securely protect the iPad2, which is thinner and weaker against external impact than the iPad. Since melamine facing plates are used as the panels, the stylish hard case looks more beautiful, tempting users to carry it outdoors. We can also provide hard cases for other tablet PC.

Solutions for our clients

We have facilities that can handle all processes from planning and design to completion of products in-house. Our manufacturing focuses on how to cast customer ideas wholly into shapes starting from one unit. Therefore, we are confident that our response capabilities will never be outdone by other makers in Japan or overseas. We can meet customer requests for producing cases designed for video and communication equipment, precision equipment, chemicals, robots, photovoltaic cells, and PCs. Moreover, we will continue developing five new products in-house every month, and thus will contribute to the development of society.

ACTEC CO., LTD. <http://www.actec1972.co.jp/> English

3-10-10, Nagaokagumachi, Hirakata City, Osaka

ISO 9001

ISO 14001



Plastics processing to keep food fresh (Embalance processing)



Key features of the product

1. Can keep food fresh.
2. Can control the decrease in food nutrients.
3. Processing of various types of resins possible

Embalance processing is a method of mixing thermoplastic resins such as polypropylene and polyethylene, with specially treated water. We have patented the technology in Japan and the U.S. Using resin processed by this method, we produce and market containers for preserving foods, etc. Because the method enables processing into resin, we can process polyester to produce yarn and textile products.

Solutions for our clients

The assumed customers among general users are housewives who want to use food without generating waste, while the assumed customers among commercial users are food service stores. Particularly, it is possible for commercial users to reduce food costs by extending the freshness of food by one day. Moreover, because our special processing of materials can give new features to products, we can make original goods for general stores. We have the know-how for commercialization from production to packaging planning, and can commercialize products according to customer requests. Regarding textile products, we can commercialize products that have heat-retention, deodorization, and relaxation effects.

Whitemax Co., Ltd. <http://www.whitemax.co.jp> Japanese only

1-1-25, Doyama, Hirakata City, Osaka



Jelly kit drug "GT drug (Gel Together drug or good taste drug)" with new dosage forms



Key features of the product

1. Can be applied to all kinds of solid and powder medicines.
2. Can be applied to high-active medicines including anticancer drugs.
3. Can be applied to LCM measures and new medicines.

The jelly kit drugs are the world's first drugs with new dosage forms that enable users to take medicine without feeling bitterness only by pushing gelatinous jelly from the packaging as a swallowing support without drinking water. The drug and the swallowing-facilitating jelly are combined to make one kit. The active ingredient is wrapped in oblate, which masks the taste and smell of medicine.

Solutions for our clients

The jelly kit drugs can increase the ability of taking medicines of all patients with swallowing difficulty, elderly people and infants, and renal patients who are subject to a restriction of water intake. Because the medicinal properties are wrapped in oblate, users can simply and deliciously take medicines together with the jelly. Thus, the jelly kit drugs prevent users from refusing to take medicines, thus reducing the burden of nursing persons and caregivers. Because the jelly kit drugs can become the optimal means of life cycle management (LCM) that extends the product life cycle by changing dosage forms, pharmaceutical companies can have an advantage that they can quickly deliver newly developed drugs by shortening the drug design process. The jelly kit drugs can be applied to drugs from a very small amount of 10 mg to a high volume of 1,000 mg.

MORIMOTO PHARMA CO., LTD. <http://www.morimoto-iyaku.jp> English

1-25, Senriyamamatsugaoka, Suita City, Osaka

Good planning capability

One-of-a-kind technology

Made in Japan

Trial production possible

Mass-production possible



Tamagon (Ball washer-driers for ball pools)



Key features of the product

1. One unit can handle the washing, wiping and drying processes.
2. Can call attention to cleanliness.
3. Can make integrated use with a ball pool.

The Tamagon is the only machine that can both wash and dry balls used for ball pools. All users have to do is to put the balls into the machine, and balls come out clean and wiped dry. It is even possible to place Tamagon next to a ball pool, and let children throw balls into the machine to make it wash the balls. Capacity: 3,200 to 3,600 balls per hour, size: W680, D500, H1450mm. No water facilities are required.

Solutions for our clients

We have been engaged in the development of peripherals for amusement industries. These ball washer-driers are new products that were born out of requests from customers in the ball pool business. Because the machine can wash balls during business hours while customers are watching, they emphasize and promote cleanliness. Moreover, a skeleton type that displays the washing process inside has a mechanism that entertains children and looks pleasing to the eye. Users require no water facilities, and can install machines anywhere that there is a power supply. The machines do not leak water used for washing.

KIRARA, INC.

<http://www.kirara-do.com/> [Japanese only](#)
1-6-14-3, Kidonishimachi, Kawachinagano City, Osaka



Recycled aggregate manufacturing system for ready-mixed concrete, based on the recycled aggregate wet type gravity concentration method



Key features of the product

1. Can produce structural recycled coarse aggregate.
2. Can produce structural recycled fine aggregate.
3. About 90% commercialization rate (yield) is possible.

To enhance recycled aggregate for structural quality, it is necessary to cut the mortar that is attached around the aggregate. Such process, however, requires huge energy and generates a large amount of waste. Using the difference in specific gravity by volume of attached mortar, the recycled aggregate wet type gravity concentration method enables the sorting and manufacturing of high quality aggregate and low quality aggregate.

Solutions for our clients

Although the reuse rate of concrete exceeds 90%, it is mostly reused as base course materials. Recycling as base course materials has its limits, however, and the use of recycled aggregate for concrete should be promoted. Our recycled aggregate manufacturing system enables the production of recycled aggregate that satisfies the quality of crushed stones for concrete. By producing high quality recycled ready-mixed concrete using such aggregate, we can realize the conversion from recycling to reuse. Only our gravity concentration method-based system corresponds to the quality classification (H, M, and L) on a commercial base, which is set by JIS (Japanese Industrial Standard).

KYOBOSHI CO., LTD.

<http://www.concle.co.jp> [English](#)
965, Son-enji, Hirakata City, Osaka