



## Horizontal intermittent cartoning machines



### Key features of the product

1. Can make thin boxes with razor-sharp edges.
2. Quick and reliable resizing is possible.
3. Boxes can be beautifully finished by comb-like surface belt transportation.

Our main product, the horizontal intermittent cartoning machine, can produce thin boxes with razor-sharp edges. Moreover, the use of comb-like surface belt transportation ensures a consistently clean sealing finish.

### Solutions for our clients

Some 90% of our customers are pharmaceutical companies, followed by food, cosmetics, and machine parts manufacturers. We have an integrated build-to-order manufacturing system from design and development to manufacture and introduction. Therefore, we can provide flexible and detailed services that include retrofitting into existing lines and staged introduction of machines that gives priority to cost-effectiveness. Recently, we have received many requests for machines with built-in laser markers that can print barcodes, and we take great pride in our contribution to the enhancement of security and traceability.

**MIKITA MACHINERY Co., Ltd.** <http://www.mikitakikai.co.jp/English/index.html> [English](#)



## 'Robovie-R ver.3" everyday-use communication robot platform



### Key features of the product

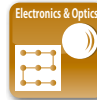
1. Highly capable of moving over irregular surfaces
2. The cost of drive mechanism was reduced while maintaining power.
3. Enables communication with various sensors and portable terminals.

Robovie-R3 was developed for a robot-based platform for the research of communication between humans and robots. Robovie-R3 is oriented for demonstration experiments of various robot services that will be conducted along shopping streets and stations.

### Solutions for our clients

Robovie-R3 is a product designed for researchers who research communication between robots and humans, and developers of robot services. We have realized unparalleled low prices for robots that can move over heights of 1m. Because the robot platform is equipped with functions required for providing various kinds of services, such as shopping and showing the way, users can reduce hardware development costs. With the built-in notebook PC that can run Windows software, the robots can communicate with various sensors and existing products including mobile phones, and thus have high versatility and can be used for extensive service development.

**Vstone Co., Ltd.** <http://www.vstone.co.jp> [English](#)  
2-15-28, Mitejima, Nishiyodogawa-ku, Osaka City, Osaka



## Dual modulation spectrum system



### Key features of the product

1. Two-way communication system for R/C hobbies
2. Strong radio and noise interference resistance and good communication performance
3. Stable transmission and reception for machines 1 km away.

The development of hobby radio communications has been centered on products on the 2.4 GHz bandwidth, while radio and noise interference resistance has improved exponentially. We have adopted a diversity antenna system of strong directionality so that communications on the 2.4 GHz band are ensured. The transmitter of our system can receive information from a flying machine 1km away and display it on the unit.

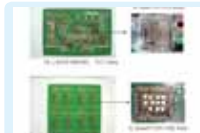
### Solutions for our clients

Our main customers are in the R/C hobby markets. The development of radio communication technology is based, however, on other technologies such communication technology, resin molding design and metal cutting design, motor control technology and attitude control technology, which can be used for various other purposes. Therefore, we can respond to requests from other business category for the development for special products. We have our own plants in Japan and Malaysia, and provide total services from product manufacture to packaging. We have developed an extensive overseas network with sales agents in the U.S., Europe and Asia.

**JAPAN REMOTE CONTROL CO., LTD.** <http://www.jrpropo.co.jp/> [English](#) / [中文](#)  
2-2-12, Eiwa, Higashiosaka City, Osaka



## High-quality, low-cost printed circuit boards



### Key features of the product

1. Pattern design that reduces product costs
2. Proposal of new base materials according to product applications
3. Quick delivery after processing from trial manufacture to commercial production of lots

Since we handle both pattern design and board production by taking the process procedure and manufacturing specs into consideration, we can provide low-cost, high-quality products. Moreover, given the diversity of applications and operating conditions of printed circuit boards, we can propose a selection of better base materials.

### Solutions for our clients

Since our boards are mainly used as customized parts in electronic products, we have electronic product makers as our customers. We make individual wiring boards for each product. Therefore, to develop a single product, we perform all processes in-house from design and trial manufacture to board manufacture and product launch. Thus, we can quickly deliver low-cost high quality products.

**MURAKAMI ELECTRIC IND. CO., LTD.** <http://www.murakami-elec.co.jp> [English](#)  
2-4-20, Kamihigashi, Hirano-ku, Osaka City, Osaka

Good planning capability One-of-a-kind technology Made in Japan Trial production possible Mass-production possible

**CONTACT: Osaka Core Manufacturing Technology Network (Detailed information: P13) E-mail : monob2b@mydome.jp**



## LiFePo<sub>4</sub> type lithium-ion rechargeable batteries



### Key features of the product

1. More than 2,000 cycles in use
2. Small and lightweight
3. Large 100 Ah capacity

We are one of a few companies that market LiFePo<sub>4</sub> type lithium-ion rechargeable batteries in Japan. Our rechargeable batteries have a large capacity of 100 Ah and their weight is less than half of lead batteries. Moreover, the rechargeable batteries have a long service-life with more than 2,000 cycles total.

### Solutions for our clients

We continue to develop and sell secondary batteries. By providing 100 Ah large capacity, iron-phosphoric acid type lithium-ion rechargeable batteries, we can contribute to long-term power supplies and reduce electricity shortages. The assumed customers are companies that are planning to use solar panels and household storage batteries, and companies that require electricity in plants and for on-site work. We also specialize in inverters and LED lighting systems that can run on 100V AC supplied from batteries. We can develop products according to customer needs.

**YASHIMA DENGYO CO., LTD.** <http://www.dlgbattery-japan.com> [English / 中文](#)  
4-13-3, Nakamoto, Higashinari-ku, Osaka City, Osaka



## IR absorbing filters for CMOS sensors



### Key features of the product

1. Less dependence on optical incidence angle compared with coated products
2. High moisture resistance
3. Can be customized according to infrared half-value wavelength, etc.

IR-cut filters and lowpass filters are used with camera CMOS sensors to prevent a reduction in image quality. At present, a large number of digital camera makers have used our IR-cut filters, and we have expanded our market share. Therefore, there are high expectations for our products and markets are expected to expand as a result of that.

### Solutions for our clients

The IR absorption filter is laminated with a lowpass filter after a post-process of vapor deposition of an antireflection coating. Therefore, the assumed customers are vapor deposition makers, lowpass filter manufacturers, and electronic manufacturers that produce digital cameras. We specialize in customizing transmission properties to customer requests. Moreover, because we can provide integrated production processes comprised of development, manufacturing, and post-processing, we can enable customers to reduce costs and the burden of managing suppliers.

**ISUZU GLASS CO., LTD.** <http://www.isuzuglass.co.jp> [English / Deutsch](#)  
6-3-6, Minamitsumori, Nishinari-ku, Osaka City, Osaka



## Optical components for LED lighting systems



### Key features of the product

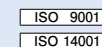
1. Can arbitrarily distribute light using original optical design technology.
2. Can reduce chromatic aberrations by diffraction grating.
3. Can reduce luminance non-uniformity using microlens.

We can provide customized and standard lenses according to customer requirements. Regarding customized products such as general illumination and LCD backlights that use LEDs as a light source, we can propose optical components to meet customer requests, based on our proprietary optical design and ultraprecision machining technologies.

### Solutions for our clients

Although LED lighting systems have problems such as brightness non-uniformity on the irradiated surface and chromatic aberrations, our products can improve brightness uniformity with the use of microlens arrays and Fresnel lenses based on ultraprecision machining technology. As for chromatic aberration, we can make lenses with little chromatic aberration by forming diffraction gratings of nanometer precision on the lens surface. These lenses can be applied to LED electric lamps, LCD backlights, automotive headlights, and LED flashes for mobile phones, thus we can contribute to society's need to conserve energy.

**Nalux Co., Ltd.** <http://www.nalux.co.jp/> [English / 中文](#)  
2-1-7, Yamazaki, Shimamoto-cho, Mishima-gun, Osaka



## Processing various optical elements



### Key features of the product

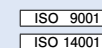
1. Processing of various shapes (various kinds) possible
2. Can perform all processing in-house.
3. Small lots starting from one unit possible

We can handle a variety of processing items and perform all processes from polishing to vacuum deposition, cementing, and painting in-house. Moreover, we can process high precision cylindrical lenses and have realized 0.1% reflectance (450 to 630nm) in vapor deposition, which has been highly rated by customers.

### Solutions for our clients

We can meet various needs of customers such as medical equipment makers, measuring instrument makers, universities, and optical research organizations, and can supply high precision, high quality spherical lenses, cylindrical lenses, prisms, glass substrates, and other products of special shapes. Moreover, we specialize in manufacturing of a wide variety of products in small quantities, and meet requests for trial manufacture and special order products for necessary items starting from one unit.

**KIKUCHI PRECISION OPTICS CO., LTD.** <http://www.kikuchi-kougaku.co.jp/> [English](#)  
213-1, Ohnoshiba-cho, Naka-ku, Sakai City, Osaka



Good planning capability One-of-a-kind technology Made in Japan Trial production possible Mass-production possible

**CONTACT: Osaka Core Manufacturing Technology Network (Detailed information: P13) E-mail : monob2b@mydome.jp**



## 20-channel ohm testers



### Key features of the product

1. Suitable for determining the normality of battery cells
2. Channels can be increased up to 40.
3. Cost reductions per channel

This miniature, lightweight ohm tester with a built-in 20-channel scanner can increase the number of measurement points up to 40 channels. This tester is suitable for the measurement of multipoint resistance values for lithium ion batteries that have several cells, as well as connectors with many measurement points.

### Solutions for our clients

The assumed customers are users that need to measure resistance values in multiple points in order to check and maintain the quality of products, such as secondary battery manufacturers, equipment manufacturers who use secondary batteries, connector and harness manufacturers, and the automobile industry. The testers reduce facility costs for resistance measurements, achieve space-saving, and shorten measurement man-hours. Moreover, since the tester has a built-in low-current power source for measuring, it does not require a connection to current source load device or an impedance meter, which makes measurement simple and easy. Measuring targets of the testers are connectors and batteries for which demand is expected to grow. These testers are helping to automate multipoint measurement.

**TSURUGA ELECTRIC CORPORATION** <http://www.tsuruga.co.jp/> [English](#) / [中文](#)   
1-3-23, Minamisumiyoshi, Sumiyoshi-ku, Osaka City, Osaka



## Thermal barrier coating agent for windowpanes (Kisan coating ATO)



### Key features of the product

1. Transmittance of visible light is the same as general glass.
2. Shields infrared light as much as possible.
3. Shields ultraviolet light as much as possible.

When the coating agent is applied to inside windowpanes, a transparent thin film is formed, which blocks infrared and ultraviolet light. The film reduces room temperature 2 to 5°C in summer and prevents indoor heat from escaping outdoors in winter, making the agent an energy-saving product.

### Solutions for our clients

We propose power-saving and energy-saving measures starting from glass. Customers can reduce cooling/heating expenses in residences, office buildings, and plants by coating our proprietary nano-metallic oxide onto windowpanes. The coating agent has good heat shielding and insulation property and blocks ultraviolet light while maintaining a bright indoor space as if no coating is applied to windowpanes.

**Kisan Kinzoku Chemicals Co., Ltd.** <http://www.kisankinzoku.co.jp/> [English](#)   
2-13-57, Nakajima, Nishiyodogawa-ku, Osaka City, Osaka



## Metal working fluids, special greases, special lubricating oils



### Key features of the product

1. Research and development of oils suitable for applications
2. Line-up centering on high-performance special-purpose items
3. Manufacturing of a wide variety of products in small quantities

Metal working fluids: Optimal oils are selected based on a combination of processing elements such as grinding, cutting, and plastic working, and material elements such as general steel, nonferrous metals, and ceramics. Slide greases: Used for electricity contact points of automobiles, consumer electronics, etc. Have the effect of contact protection, life extension, and feeling adjustment. Lubricating oils for high temperature: Used for chains of driers and biaxial tenting machines. Have the effects of reducing sludge, preventing scattering and reducing oil consumption.

### Solutions for our clients

In response to customer who "cannot procure oils suitable for processing" and "cannot obtain desired effects from general-purpose products", we develop and provide special oils to meet conditions of use, as a chemistry specialist. By making full use of the experiences and results that we have cultivated over many years and the most advanced technologies, we can make one and only products. Moreover, we can manufacture a wide variety of products in small quantities, which major oil makers find difficulty to do, and can meet customer requests based on rich knowledge and experience, and reliable development technologies.

**SATO SPECIAL OIL CO., LTD.** <http://www.satooil.co.jp/> [English](#) / [中文](#)   
1-4-17, Imafukuhigashi, Jyoto-ku, Osaka City, Osaka



## "N containers (Returnable containers)" internationally patented recycling-oriented products



### Key features of the product

1. Zero-emission and carbon offsetting
2. Can be simply folded and assembled.
3. Free design in accordance with products to transport

"N containers" have a patented structure and can be easily assembled and dismantled. Making full use of various designs, the low-cost containers can satisfy all kinds of customers. As returnable containers and packing materials, the containers can be recycled and reused so as to conduct operations waste-free.

### Solutions for our clients

We have developed our business focusing on industrial parts in a variety of fields including light electrical parts, building materials, industrial materials and communication, and pursued the creation of eco-friendly recycling-oriented products and the development of technologies. We manufacture and market niche products to extensive business categories. Because the containers are distribution-related products, they can be applied to all kinds of industries and business categories. In particular, we have made the containers usable overseas in response to recent transfer of operations overseas by businesses (by applying for and partially obtaining international patents). With the introduction of a simple lock system, the containers can be assembled and dismantled even by one female operator. The pallet-size containers can be folded and stored in less space.

**NAKAYAMA INDUSTRY CO., LTD.** <http://www.nakayama-ind.co.jp/> [English](#)  
4-10-19, Nishinakajima, Yodogawa-ku, Osaka City, Osaka

Good planning capability One-of-a-kind technology Made in Japan Trial production possible Mass-production possible

**CONTACT: Osaka Core Manufacturing Technology Network (Detailed information: P13) E-mail : monob2b@mydome.jp**