



## CAD/CAM system and various types of automatic processing machines



### Key features of the product

1. One CAD system can control all automated machines.
2. Carry out development, production, sales and maintenance in-house.
3. Acquired several patents and have them protected.

In addition to our proprietary CAD system that can control all automated machines, we provide high-precision and highly-functional automatic processing machines that can be used in manufacturing plants and offices of various industries, such as laser processing units, water jet systems, cutting plotters, automatic cutting tool bending machines, and blanking systems.

### Solutions for our clients

Our CAD system enables users to centrally control various production machines, without preparing control CAD systems for each system. The industries to which our CAD system can be applied include the printing paper container and corrugated box manufacturing industries (for machines used in the processes of design, sample-making, making of cutting dies, and removing products after the die cutting process), clothing and other textile industries (for pattern-making machines), signage and display industries, store layout and signboards manufacturing industries (for machines producing exhibits), and industries manufacturing parts for automobile and aircraft industries (for machines that can make samples and small-lot products).

**LASERCK CORPORATION**

<http://www.laserck.com> [English](#)  
2-91, Wakabayashi, Yao City, Osaka

ISO 9001



## Small component transfer robot system



### Key features of the product

1. Can propose appropriate systems based on past results.
2. High reliability based on the appropriate system
3. Realize high speed and downsizing.

We have realized high reliability in transport segments that are often neglected in the system configuration, by using robots. Moreover, to cope with the acceleration of product cycles, we have introduced robots that make it possible to change and start production lines in a short amount of time by changing the robot teaching program.

### Solutions for our clients

We will mark the 60th anniversary of the founding of the company this year. We have developed as a specialized maker that provides planning, development, design and manufacturing of various types of automation and man-power-saving systems such as factory automation, robots, and mechatronics. On a daily basis, we put together system projects and manufacturing systems in business deals that cover not only robot makers including Yaskawa Electric, Fanuc, Nachi-Fujikoshi, Daihen, and Denso, but also industrial categories ranging from the heavy industries, light electrical, automobiles to medical facilities. Based on our accumulated know-how of systems, we can propose the system configuration that is the most suitable for customers.

**DAIKO TOOL MFG CO., LTD.**

<http://www.daikokikai.co.jp/> [English](#)  
20-1, Kitaohi-cho, Takatsuki City, Osaka



## "Million guide" needle roller type guide post



### Key features of the product

1. Hexagonal liner roller guides used
2. High rigidity and accuracy, and rotation stopper
3. Low pre-loading gives the roller smoothness and a long service-life.

"We use needle rollers instead of ball rollers." – The Million guide adopts a hexagonal liner roller system and balances high rigidity in all directions. This is the "ultimate form" of liner guide. The main applications are mounting machines, guides for FA, various types of mold guides, etc.

### Solutions for our clients

These liner guides are used for precision molds and systems. The assumed customers are electronic components, information equipment parts, consumer electronics parts, and automobile parts industries. By applying the "Million guide" to precision molds, users can achieve large cost reductions by increasing rigidity, improving product precision, decreasing defect rate, and prolonging die life. Our products also demonstrate their quality as a guide for systems that require rigidity. We can also meet customer requests for special processing.

**ISEL CO., LTD.**

<http://isel.jp> [English](#)  
1-2-16, Atobekitano-cho, Yao City, Osaka

ISO 9001

ISO 14001



## Electric resistance stud bolt welding system



### Key features of the product

1. Electric resistance welding makes welding quality stable.
2. Water-cooled electrode reduces costs.
3. Thin steel plates under 0.7mm in thickness can be welded.

Conventionally, stud bolts are welded to automotive body parts by arc welding. With the increased use of corrosion-proof steel sheets in recent years, however, steel sheets have become thinner so as to reduce weight, which inevitably causes more welding failures. Therefore, we have developed a simple welding process based on electric resistance welding, which can realize high-quality stud bolt welding.

### Solutions for our clients

The main users of our welding system are automotive body plants and parts makers, but we also consider potential use in various fields including consumer electronics, farm equipment, and housing industries. Conventional technology requires costly management to ensure welding quality such as frequent maintenance of equipment and 100% product inspections. However, our system requires users to perform management on the same level as general spot welding and thus enables users to ensure welding quality and reduce costs. In particular, the use of our system helps users to increase the rate of operation on robot-based automatic welding lines and thus largely improve productivity.

**TECHNO AOYAMA Inc.**

<http://www.t-aoyama.co.jp> [English](#)  
1931-1, Fukasaka, Naka-ku, Sakai City, Osaka

Good planning capability One-of-a-kind technology Made in Japan Trial production possible Mass-production possible

**CONTACT: Osaka Core Manufacturing Technology Network (Detailed information: P13) E-mail : monob2b@mydome.jp**



## High frequency dielectric heating-applied products



### Key features of the product

1. Heating by high-frequency, or microwave
2. Rapid, uniform heating
3. High thermal efficiency and good energy saving

Dielectric heating based on high frequency, or microwave is internal heating in which objects are self-heated. It ensures rapid, uniform heating compared with conventional hot air and steam heating. Our products have been used in a wide range of fields including heating and drying of plastics, wood, food, and ceramics, as well as cancer treatment.

### Solutions for our clients

We can contribute to the world by making products specialized in dielectric heating. The TEMPATRON is a high frequency tempering machine designed for large-scale food plants, and can unfreeze a large amount of frozen food materials made of beef, pork and chicken without losing their quality. The THERMOTRON is a high-frequency-based hyperthermia treatment apparatus that uses the cancer cells' weakness against heat. The apparatus has attracted global attention as a new cancer treatment without side effects.

**YAMAMOTO VINITA CO., LTD.** <http://www.vinita.co.jp/> [English](#)  
6-3-12, Ueshio, Tennoji-ku, Osaka City, Osaka



## Solvent-Free ultrasonic metal stencil cleaner



### Key features of the product

1. Solvent Free
2. Simultaneous Cleaning and drying operations using proprietary cleaning head
3. Huge Running Cost Reduction

The Sawa Ecobrid SC-AH100 is an eco-friendly ultrasonic wave metal stencil cleaner that uses a VOC-free cleaner, "Sawa Water" is nonpolluting alkaline electrolyzed water created from city water. Non surfactant, non chemically synthesized substance contained. Earth friendly cleaning water effectively eliminates stains.

### Solutions for our clients

The Sawa Ecobrid SC-AH100E is a metal stencil cleaner that can extensively support customer environmental measures. Using a proprietary cleaning process, the cleaning and drying can be completed in about 5 minutes. This product can help reduce the energy consumption at factories and CO<sub>2</sub> emissions by 43% (compared with other products of Sawa Corporation.) Moreover, using electronic alkaline water, it can help reduce organic solvent consumption that harms human health and environment.

**SAWA CORPORATION** <http://www.sawa-corp.co.jp/> [English](#) / [中文](#)  
2-17-1, Tsudayamate, Hirakata City, Osaka



## Organic and nonorganic hybrid particle testers and manufacturing equipment



### Key features of the product

1. Can produce hybrid nanoparticles.
2. Can produce nanoparticles with little agglomeration.
3. No pulverization is required.

The supercritical water nanoparticle synthesizer synthesizes nanoparticles using the properties of the supercritical state of water based on the supercritical hydrothermal synthesis method developed by Professor Tadafumi Adschiri of Tohoku University's WPI Advanced Institute for Materials Research (WPI-AIMR). The synthesizing method enables the manufacture of nanoparticle materials that have new functions and properties.

### Solutions for our clients

We have delivered nanoparticle synthesizers to the research laboratories of universities and manufacturers of various types of materials. With the introduction of our systems, customers can perform experiments on synthesizing and produce nanoparticles at their research laboratories. Using nanoparticles, customers can synthesize next-generation lithium ion battery materials, solar cell materials, and magnetic materials. Moreover, as organic and inorganic hybrid nanomaterials, users can synthesize new materials with new functions, such as nanoparticles for power device materials that give resin high heat conductance.

**ITEC Co., Ltd.** <http://www.itec-es.co.jp/> [English](#)  
4-132-1, Kannabe-cho, Sakai-ku, Sakai City, Osaka

ISO 9001



## Automatic tool grinders



### Key features of the product

1. Can regrind four kinds of tools such as drills.
2. Simple program-less control
3. Compact design to enable regrinding on tables

This fully automatic tool regrinding machine can regenerate a majority of rotating tools used in production sites. Anyone can immediately operate the grinders by operating the easy-to-understand screens and inputting a few numerical values. Moreover, full automatic grinding prevents quality variations between different operators.

### Solutions for our clients

Because customers can regrind tools that used to be outsourced to external regrinding companies, in-house, they can save the time from sending tools until they are returned, and reduce the number of extra tools required during the outsourcing process. Moreover, our grinders are effective for companies that have no grinding department, particularly for small and medium-sized enterprises. Even with companies that have grinding departments, our small, space-saving and easy-to-use automated machines can offer efficient regrinding.

**KANAE GIKEN CO., LTD.** <http://www.kanae-giken.jp/english/index.html> [English](#)  
2-19-10, Tsudayamate, Hirakata City, Osaka

Good planning capability

One-of-a-kind technology

Made in Japan

Trial production possible

Mass-production possible



## Highly efficient electric blowers Equipped with Premium efficient (IE3) motor



### Key features of the product

1. High efficiency
2. Superior heat resistance and corrosion resistance
3. Optimal products can be selected from 30,000 models.

We provide a variety of compact blowers equipped with in-house motors via quick accurate delivery. We have promoted high efficiency by combining newly designed high efficiency motors with high efficiency blowers. Our electric blowers can be installed in any kind of industrial equipment and systems for various applications.

### Solutions for our clients

Making full use of "flow technology" and "rotary machine technology," we manufacture blowers that can be used for any kind of industrial equipment. The assumed customers are semiconductor makers, food makers, and other companies that use industrial equipment including industrial furnaces and driers. By using energy-saving highly efficient electric blowers, customers can promote energy-savings and reduce emissions of greenhouse gases. As the effects of using the electric blowers, customers can reduce power consumption by up to 17% (compared with other products from Showa Denki).

SHOWA DENKI CO., LTD. <http://www.showadenki.co.jp> [English](#)  
1-25, Shindenkitamachi, Daito City, Osaka

ISO 9001  
ISO 14001



## CLP-35DDS high accuracy gear Measuring instruments



### Key features of the product

1. Enable highly accurate gear measurements at production sites.
2. High efficiency, high functionality and long service-life
3. International MRA-accredited company

The machines of the CLP-35DDS series are successor models of the world's first NC gear measuring instruments, the GC-HP series, and feature high accuracy, strong resistance against temperature change, and quiet operation. The CLP-35DDS models can be used in various fields where high quality gears are required such as those for automotive transmissions and drives for office automation equipments, and is suitable for the measurement of ground gear and injection molded plastic gears.

### Solutions for our clients

The accuracy of gears largely affects noise and vibration of machines, printing irregularities of printing machines, and also damage of gears themselves. If customers can measure and guarantee the high accuracy required of gears by using the highly reliable gear precision evaluation system of the CLP-35DDS series, they can have a competitive edge in terms of gear accuracy on global markets. The reliability of the measuring instrument is exhibited by the world's top-level measurement capability of gear calibration instrument, which are used in our gear calibration laboratory (that is the only one gear calibration laboratory in Japan and internationally accredited under mutual recognition arrangement).

Osaka Seimitsu Kikai Co., Ltd. <http://www.osk-corp.co.jp> [English](#) / [中文](#)  
6-5-16, Mikuriya, Higashiosaka City, Osaka

ISO 9001



## High-performance reverse osmosis member water purification system



### Key features of the product

1. Can be employed for generating contaminated groundwater into drinking one.
2. Safe, healthy and good tasting water is provided.
3. Space technology is applied for the water purification system

Our company has been manufactured and marketed water purification systems these 18years. The system can generate harmful contaminated water into drinking water. Safety, healthy and good tasting water was invited for the result of the space technology which researched and developed with Japan Aerospace Exploration Agency(JAXA).

### Solutions for our clients

Our purification systems can remove not only heavy metals such as Cadmium, Arsenic and Mercury but also toxic chemicals such as Nitrate-nitrogen and Formaldehyde as well as radioactive substances as Cesium and Iodine. Our sales line is consist of three types of water purification systems: (1) Water purification system for residence use which can be generate the water from well and tap into drinking water. (2) Commercial use system which is employed at restaurants and hotels. (3) Rescue water purification system which can be generate drinking water from sea water in the case of disaster. These systems can provide drinking water 0.4 to 5 tons a day.

New Medican Tech Corp. <http://nmt.or.jp/english/english.html> [English](#)  
15-8, Kawagishi-cho, Suita City, Osaka



## Image (camera and laser) measuring system



### Key features of the product

1. Dimensional measurement is possible without touching workplaces.
2. Scratches and waste can be examined.
3. Separately, we can develop and manufacture LED lighting systems.

The system enables users to perform highly accurate measurements of workplaces of a variety of shapes without touching them. No dedicated operators are required as anyone can easily operate the system. The system automatically outputs analysis data. Moreover, we can provide LED lighting systems as an energy-saving measure.

### Solutions for our clients

Our image-based size measuring systems have been highly rated by customers as they can quickly and accurately measure LCD panels of TVs and mobile phones, polarizing plates, diffuser panels, metalworking parts, office automation equipment parts, camera parts, resin molding parts, and all kinds of seal-shaped workplaces, and enable users to quite easily perform inspection before product shipment. We have delivered the systems to customers in the USA, EU and Asia in large numbers and at reasonable prices compared with other companies, and customers who have introduced our systems have highly evaluated them. Moreover, we have provided LED lighting systems as straight type use and for plant lights and street lights.

CHUO ELECTRIC WORKS LTD. <http://www.e-cew.co.jp/> [English](#)  
2-7-12, Uchindai-cho, Miyakojima-ku, Osaka City, Osaka

ISO 9001

Good planning capability One-of-a-kind technology Made in Japan Trial production possible Mass-production possible

CONTACT: Osaka Core Manufacturing Technology Network (Detailed information: P13) E-mail : monob2b@mydome.jp



## Microfocus digital Xray radiosopes



### Key features of the product

1. Maximum pixel resolution is 2  $\mu$  m. 1.5M pixel image.
2. Easy operation with a large-size shielding glass
3. Ultra-low power consumption of 150W

Using the 70KV micro focus X-ray source, the desktop Xray radioscope can see through a steel plate 1mm thick with a proprietary high-sensitivity, low-noise X-ray CCD sensor. Since the pixel size is 20 $\mu$ m, the pixel resolution becomes 2 $\mu$ m at 10 times magnification. The Xray radioscope shows 1.5M pixel high resolution images on the large screens like HDTV.

### Solutions for our clients

To cope with the downsizing and densification of parts, using the desktop microfocus fluoroscope, users can promote the maintenance and improvement of product quality in their quality control and mounting sites. The microfocus Xray radioscope was developed at the request of production sites that seek equipment that "can inspect normal-size boards and has a size that does not require a large installation site", "enables anyone to easily use" and "even shows high-resolution images of semiconductor mounting." The microfocus Xray radioscope can be used like a magnifying glass or a microscope.

BEAMSENSE Co., Ltd. <http://beamsense.co.jp/> [English](#)  
2-19-16, Izumi-cho, Suita City, Osaka



## Concrete specimen end grinding machines



### Key features of the product

1. Grinds specimen ends within a flatness of 5/100.
2. Grinds three specimen end surfaces at one time automatically.
3. Uses high-speed rotating special grinders.

This is the ultimate in specimen end grinding machines. This machine grinds three specimen end surfaces at one time automatically. It is a reliable machine that reduces manpower, work time, and space to 1/3 and has posted sales results totaling more than 2,500 units in Japan. This product can be made only by a testing machine system manufacturer.

### Solutions for our clients

We meet customer requests as the top civil engineering and construction-related testing machine manufacturer in Japan. Many of our concrete specimen end grinding machines are used in various research institutes of state organizations, universities, and general contractors for studying concrete, soil properties, and rocks. When preparing specimens for concrete tests, using this very convenient machine, users can accurately grind specimens that contributes to more labor-saving operations than conventional machines. Since we specialize in testing machine systems, you can rely on us.

MARUI & CO., LTD. <http://www.marui-group.co.jp/> [English](#)  
1-9-17, Goryo, Daito City, Osaka

ISO 9001



## 100% Inspection Systems (for screws, bolts, nuts, automobile parts, medical fasteners, etc.)



### Key features of the product

1. High accuracy (meets Japanese standards)
2. High quality
3. Usability

In Japan, where the highest quality standards are set, our inspection systems accurately check and clear a wide variety of parts ranging from micron-sized solder balls that look like powder and microscopic screws for electronic components to M16-sized screws.

### Solutions for our clients

We have customers in the automotive, aerospace, military, railway, medical, electronic industries, and so on. Mechanization has evolved greatly from when it first started to now and numerous products have emerged, but one thing remains constant: all products are made up of smaller parts and any defects could lead to a serious accident. Armed with experience, proprietary technologies, and a unique know-how that we have cultivated, we continue to evolve every day and are convinced that we can contribute to our customers' quality control and efficiency.

YUTAKA CO., LTD. <http://www.tech-yutaka.co.jp> [English](#)  
24-12, Shinmachi, Higashiosaka City, Osaka



## Manual probe stations



### Key features of the product

1. Enable to handle from chips to 12-inch size wafers.
2. Enable to use for wide-ranging needs including assessment and analysis.
3. Most suitable for IV/CV, RF measurement

The probe stations are designed for electrical measurement of semiconductors and can test devices as wafers and chips. We can also provide optional probe stations that can be used for ultra-low current measurement and measurement in high temperature environments. The probe stations of customized shape are also available for use in illumination.

### Solutions for our clients

Using our manual probe stations, semiconductor developers and semiconductor process engineers can easily measure electric properties on the wafer and chip level. Moreover, since operability is taken into consideration, the stations are designed so that users can easily load and unload wafers from the front side. Our products are most suitable for IV/CV and RF measurements, and can satisfy wide-ranging needs in assessment and analysis. Thus, users can eliminate the troubles and costs associated with packaging.

APOLLOWAVE Corporation <http://www.apollowave.co.jp> [English](#)  
Daisho Bldg., 4F, 6-7-8, Nishinakajima, Yodogawa-ku, Osaka City, Osaka

Good planning capability

One-of-a-kind technology

Made in Japan

Trial production possible

Mass-production possible





## Energy Dispersive X-ray Fluorescence Spectrometer(EDXRF)



### Key features of the product

1. Compact lightweight system that enables high-performance analysis
2. Enables on-site analysis without relocating samples.
3. Easy operation that requires neither preparation nor solvents

In environmental surveys, quality control of industrial products, advanced technology development, and inspections of unearthed archeological articles and cultural assets, quick on-site component analysis is demanded. Meanwhile, because analysis accuracy is increasingly more advanced, compact low-priced products are required. We develop systems that meet such needs.

### Solutions for our clients

As the need to analyze contaminated soil, hazardous elements of consumer electronics, impurities in semiconductor components, salt damage in concrete structure, and elements contained in unearthed articles and cultural assets is increasing, our analyzers are practically used in fields such as state-of-the-art material development, environmental testing, quality control, age determination, and cutting-edge research. Moreover, applications in resource exploration and detailed blood analyses are promising in the future.

**OURSTEX CORPORATION** <http://www.ourstex.co.jp/> [English](#)  
13-20, Honmachi, Neyagawa City, Osaka



## "Sanitary" products (Tramp metal removal system)



### Key features of the product

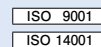
1. Rapid response to customer specifications
2. Diverse lineups
3. High magnetic force and short delivery date

Stainless steel pipes are installed with strong neodymium magnets. The pipes can be incorporated into manufacturing lines for the food, medical and materials industries. Thus, the systems can efficiently and securely remove iron dust, etc. that is mixed into products.

### Solutions for our clients

In this era where food safety is demanded worldwide, our "Sanitary" products remove metal dust from manufacturing lines of the food, medical and other industries, and enhance the safety and reliability of products. Making full use of magnetic field analysis technology, we can quickly satisfy customer needs including trial manufacture, and help customers enhance the quality of products.

**SHIMONISHI SEISAKUSHO CO., LTD.** <http://www.shimonishi.net/english/> [English](#)  
6-8-25, Wakaehigashimachi, Higashiosaka City, Osaka



## Laser Range Finders



### Key features of the product

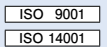
1. Compact size, light weight.
2. Enables long-range, wide-field measurement.
3. Protection Rating IP67

The sensor covers a scanning range of 30 m in detection distance and 270 ° in viewing angle. Compact size(W60 x D60 x H87mm) and light weight (370g), it features a longer range and fast response. With an IP67 Protection Rating, it is most suitable for use as an environmental detection sensor that acquires data in synchronization with the motion of service robots.

### Solutions for our clients

This laser range finder is most suitable as an environmental detection sensor for autonomous service robots that are extensively used in the life fields of medical care, nursing care, welfare, cleaning, and security, and in public fields such as disaster response. When used for the purpose of enabling a robot to avoid obstacles by judging the presence of humans in the direction of travel, visual sensors such as image sensors have the setbacks of being unusable in the dark, short detection distances, and narrow-angle detection ranges. With an IP67 Protection Rating, however, this sensor can be used for outdoor applications.

**HOKUYO AUTOMATIC CO., LTD.** <http://www.hokuyo-aut.co.jp/> [English](#)  
Osaka HU Bldg., 2-2-5, Tokiwamachi, Chuo-ku, Osaka City, Osaka



## AUTO-SLIME (Drilled pier slime measurement and removal system)



### Key features of the product

1. Realize the visualization of treatment.
2. Reduce variations in the collection of accumulated slime.
3. Cope with wide-ranging drill hole sizes.

We have developed technology for measuring slime based the latest mechatronics and sensing technologies, and realized the world's first measurement of slime for cast-in-place piles. With this achievement, we have succeeded in visualizing the distribution of slime density in holes, and, based on this technology, we have developed a slime measurement and removal system, AUTO-SLIME. Thus, we have remarkably shortened the construction time and improved construction quality at construction sites.

### Solutions for our clients

Our concept is "the promotion of ICT at construction sites." Specifically, in order to disengage on-site operators from distress work and safety management, we have brought state-of-the-art technologies to construction sites after collecting them from across the world, and have been striving for their realization. The ICT technology that we have cultivated via Japanese construction technologies will help customers at construction sites around the world. We consider Japanese construction technologies the world's best, and our company, which has made products in that rigorous environment, can provide technologies that will be accepted around the world.

**TAIYU CORPORATION** <http://www.taiyu-corp.com> [中文](#)  
4-11-7, Shimeno, Neyagawa City, Osaka

Good planning capability One-of-a-kind technology Made in Japan Trial production possible Mass-production possible

**CONTACT: Osaka Core Manufacturing Technology Network (Detailed information: P13) E-mail : monob2b@mydome.jp**



## Facing centers



### Key features of the product

1. Largely reduce machining time to improve productivity.
2. Eliminate the attachment and takeoff of faceplates.
3. Shorten operation time with an automatic pallet changer.

Because the faceplate is embedded in the product, compared with horizontal boring machines that require attachment of a faceplate, the product can further enable highly rigid and accurate deep cuts. The rotary drive system of the faceplate is different from the main axis system, and has a high torque. Because the bearing is supported with an independent large-diameter bearing, it can maintain extremely high rigidity.

### Solutions for our clients

Our facing centers are used for processing valves, parts of generators, construction machinery, shipbuilding heavy machines, aircrafts, and oil rigs. Moreover, our products can greatly reduce the time and trouble of compounded processing and increase the efficiency of fully automated production. They feature (1) a large reduction in the number of tools to be used compared with machining centers, (2) H7 hole drilling using the faceplate, and (3) installation of two faceplate tool holders.

NOMURA MACHINE TOOL WORKS, LTD.

<http://www.nomurass.co.jp/> [English](#)

ISO 9001



## Model YS-6000W universal slicer



### Key features of the product

1. Sharpness that does not damage food
2. Discharges sliced foods in a line.
3. Various types of cutting possible by changing the blade

The slicer features a proprietary cutting method based on the motions of a halberd type rotary blade and scissors, which enables sharp slicing of hard-to-cut food materials. By replacing the cutters, the slicer can be used for various kinds of cutting, such as julienne, dicing, and diagonal slicing. As the main product of Yoshiizumi Industry, the universal slicers are extensively used in various fields including processing of vegetables, meats and marine products.

### Solutions for our clients

There are numerous companies that manufacture and process food, such as convenience stores, supermarkets, food-service chains, meat processors, sushi chains, pre-cut vegetable processing companies, the lunch service industry, pickle manufacturers, marine products processing companies, and confectioners. All of such companies never stop trying to improve the quality of their products and their working efficiency everyday. Under the motto of "cutting various food materials more rationally and beautifully," we manufacture various types of food slicers to meet customer needs.

Yoshiizumi Industry Corporation

<http://www.yoshiizumi.com> [English](#)

ISO 9001



## In-yard heavy cargo transportation vehicles



### Key features of the product

1. Movable load is 1 to 50 tons.
2. Trailer-type vehicles, electric vehicles
3. Non-rail guided vehicles, rail guided vehicles

Our vehicles are most suitable for transporting ultra-heavy cargoes such as press molds, plastic injection molding molds, and steel plates and coils. The movable load is 1 to 50 tons (rail guided vehicles successfully tested up to 200 tons). The tire wheel vehicles (non-rail guided vehicles) can freely move anywhere. The rail guided vehicles are advantageous for automatic travel. Automated guided vehicles (AGV) are also available.

### Solutions for our clients

With regard to in-yard transportation, there are limited methods for transporting ultra-heavy cargoes of more than 10 tons. As a company that satisfies user needs, we have a track record of planning and proposing more than 1,000 transportation vehicles a year. We also have a track record of developing more than 200 kinds of purpose-specific vehicles a year. We provide a variety of trailers for in-yard transportation such as 2WS types, 4WS types, and turntable types at low costs. Electric vehicles are available for non-rail guided remote controller-types (wired and wireless), rail guided remote controller types (wired and wireless), and rider types. We are unmatched around the world as a company that can provide such a wide range of in-yard vehicles.

SANO SHARYO SEISAKUSHO CO., LTD.

<http://teamsano.co.jp/> [English](#)

1-9-10, Wakamatsu-cho-Higashi, Tondabayashi City, Osaka



## Industrial dryers, industrial heat treat furnaces, exhaust-gas treatment equipment



### Key features of the product

1. High-accuracy drying by the control of heat and wind
2. High-efficiency gas treatment based on catalytic combustion method
3. A combination of heat treatment and gas treatment is possible.

We manufacture and market industrial dryers, heat treatment furnaces, and their exhaust gas treatment equipment. We have manufactured a variety of dryers including hot air circulating dryers, vacuum dryers, and explosion-proof dryers. We can supply heat treatment furnaces such as kiln furnaces and conveyor furnaces. The exhaust-gas treatment equipment is a catalytic combustion plant of high efficiency and low running cost.

### Solutions for our clients

The assumed customers are chemical manufacturers, electrical products manufacturers, universities, and intra-corporate research laboratories. We perform all design and manufacture in-house, and can flexibly handle the manufacture of detailed custom-made products. Our industrial dryers are used upon demand for the drying process of volatile works that contain flammable and/or explosive organic solvents. We have a lineup of large heat treat furnaces for rigorous temperature history management and mass-processing. We supply a variety of exhaust-gas treatment equipment from small gas volume (2m³/minute) to large gas volume (2500m³/minute) in a lineup of treatment equipment of low running cost and high efficiency.

SHIMAKAWA-SEISAKUSHO Co., Ltd.

<http://www.shimakawa.co.jp/> [English](#)

ISO 14001

Good planning capability

One-of-a-kind technology

Made in Japan

Trial production possible

Mass-production possible



## Hybrid temperature transmitter



### Key features of the product

1. Combination of mechanical thermometer and electric thermometer
2. Site temperature indication and remote temperature indication are possible with one unit.
3. Electrical signals can be output after being converted by a converter.

A small electric temperature sensor is built in to the temperature sensor of the mechanical thermometer using advanced technology, so the site indication and the remote indication can be read on a single thermometer. The leads of the temperature sensor are housed in the corrugated tube of the thermometer, and the terminal is stored in the case of the thermometer.

### Solutions for our clients

This hybrid temperature transmitter enables temperature measurements in the same place using a site indicator and remote indication via an electric temperature sensor. As one specific application, the transmitter enables users to read substation transformers at the site and send the data to a remote control room as electrical signals, and thus unmanned operation of the substation becomes possible. In similar cases, the transmitters can be extensively used for temperature measurement, such as that of the bearings of material feed conveyers at ironworks and that of pipes in chemical plants.

HYODA INSTRUMENTS CORPORATION

<http://www.hyoda.co.jp> [English](#)  
1-6, Izumoi-Honmachi, Higashiosaka City, Osaka

ISO 9001



## Internal Gear Pumps



### Key features of the product

1. Can be used with fluids from low viscosity to high viscosity.
2. Can be used in small to large capacity applications.
3. Can transfer fluids as hot as 400°C .

We use proprietary Taocloid gears for our internal gear pumps. We have succeeded in developing pumps that can discharge fluids at as much as 500m<sup>3</sup>/h, the world's highest. Our internal gear pumps can be used for discharging fluids from 50cc/min to 500m<sup>3</sup>/h. The pumps can transfer fluids of viscosities as high as 2.5 million mPa.S.

### Solutions for our clients

Our products have been used in coal liquefaction plants in Japan and overseas, where pumps are required to have abrasion resistance and handle fluids as high as 380° C, and they have been operated without troubles and highly evaluated. There are examples where companies that had been troubled with pumps made by other makers, and succeeded in solving their troubles after changing to our pumps. We can design and manufacture pumps ranging from standard pumps to pumps with special specifications. We have established a production plant in Shanghai, and have developed overseas agents in India, South Korea, Taiwan, Thailand, Malaysia and Singapore.

DAIDO MACHINERY CORPORATION

<http://www.daidopmp.co.jp/> [English](#)  
1-26-26, Fukazawa-cho, Takatsuki City, Osaka

ISO 9001



## Mechanical patterning Machine for CIGS thin-film photovoltaic cells



### Key features of the product

1. State-of-the-art Patterning
2. Ultra long life Tool
3. Specially designed CIGS patterning head

Patterning is created on chemical compound-based polycrystalline thin films used for photovoltaic cell panels, to increase generating efficiency when they are processed. We have developed needle-like tools that can be used for microfabrication of 30μm in minimum width. The tools help to lessen dead area and increase yield in mechanical patterning.

### Solutions for our clients

The chemical compound-based thin-film photovoltaic cells have a structure comprised of a single electrode-attached glass substrate laminated with a sunlight absorbing layer made of copper, gallium, selenium, etc. and a conductive film on top. Several cells are simultaneously used for generating power. Our LCD panel cutting technology has a 70% share of the FPD market worldwide. By applying this LCD panel cutting technology to the patterning machine used in the photovoltaic cell production process, we have developed a machine that can create the narrowest dead area on the CIGS compound-based thin-film of photovoltaic cells.

Mitsuboshi Diamond Industrial Co., Ltd.

<http://www.mitsuboshidiamond.com/> [English](#) [中文](#) [한국어](#)  
32-12 Koroen Settsu City, Osaka



## Trial manufacture of printed circuit boards for R&D (research and development)



### Key features of the product

1. Can deliver boards after 4 trial manufacture processes in just two days.
2. One-stop service for 4 processes
3. Can handle four kinds of printed circuit boards.

We provide the technology for four processes (board design + printed circuit board + parts procurement + board mounting) of trial manufacture of boards for R&D (research and development) at the fastest speed possible. We can handle four kinds of printed circuit boards - (1) FR-4, (2) FPC, (3) RIGID-FPC, and (4) AI-BASE.

### Solutions for our clients

The assumed customers are research laboratories of manufacturers, universities, research institutes, and new businesses from other industries. To survive the global competition among companies, the speed of product development holds the key to business growth. We can propose comfortable one-stop service to customers so that they can concentrate on creating new technologies, functions and design values and conducting their verifications. Moreover, through our affiliated company in Hong Kong, we can support commercial production at low cost in China after trial manufacture.

DENSHI-GIHAN CO., LTD.

<http://www.denshi-gihan.co.jp> [English](#)  
62-8, Toyotsu-cho, Suita City, Osaka

Good planning capability One-of-a-kind technology Made in Japan Trial production possible Mass-production possible

CONTACT: Osaka Core Manufacturing Technology Network (Detailed information: P13) E-mail : monob2b@mydome.jp



## Low-temperature workbench for blood products



### Key features of the product

1. Most suitable for maintaining quality in the production process and supply operations
2. Can keep red blood cell concentrates at a temperature of around 4°C.
3. Can keep Fresh-frozen plasma at a temperature of not more than -20°C.

In the production process and supply operations for blood products, this workbench allows users to work efficiently as it prevents increases in temperature, maintains blood products in good quality and keeps them at a low temperature even indoors at room temperature. In Japan, we have been delivering products like this to the Japanese Red Cross Blood Center for more than 30 years, and the product is approved as medical equipment.

### Solutions for our clients

We have supplied blood bank refrigerators for blood services mainly conducted by Japanese Red Cross Blood Center. The blood bank refrigerators help to maintain the quality of blood products, which require rigorous temperature management. In addition to blood bank refrigerators, we produce other products tailored to the components of blood products, such as incubator for platelet concentrates, horizontal shakers, low-temperature workbenches, and cold insulator for blood transportation, which are used to store blood in processes from blood drawing to blood supply. Since we have in-house facilities that can handle all processes from planning and design to completion, we can customize products for customers.

**Daido Industries INC.** <http://www.daido-ind.co.jp> [English](#)  
1-6-45, Kusune, Higashiosaka City, Osaka

ISO 9001



## FILMIX (Thin-film spin system high-speed mixer)



### Key features of the product

1. Can uniformly disperse nanometer-sized particles.
2. Allows particle design by controlling dispersion condition.
3. Prevents secondary agglomeration to ensure long-term stability.

In the production process of battery materials, we have realized nano-level dispersion for lithium ion batteries in particular. We have developed this machine's proprietary mixing principle based on the high-speed mixing technology we specialize in. The principle has been patented in 16 countries.

### Solutions for our clients

For emulsification, dispersion, pulverization and kneading needs, we have for more than 80 years been delivering products to a wide range of industries. In recent years, we have been concerned with the global environment and, though batteries are attracting attention as an energy alternative to oil today, we have been doing business with the battery industry for two decades. At present, the latest CDM continuous production systems centered around FILMIX have contributed to the manufacture of lithium ion batteries (particularly for automobile use). In particular, CDM process has allowed the production of battery cells about three times as compared to batch processing, and have improved battery performance.

**PRIMIX Corporation** <http://www.primix.jp/> [English](#) [中文](#) [한국어](#)  
8-16-43, Ebie, Fukushima-ku, Osaka City, Osaka

ISO 9001

ISO 14001



## Forging high-efficiency induction heaters



### Key features of the product

1. Built with a high-capacity low-loss IGBT element
2. Compact with eye-level pass line
3. Minimizes initial non-proper temperature materials.

Forging induction heaters employ a low-loss IGBT-applied inverter and, based on the optimal heating design, have achieved the world's lowest electric power consumption rate. With the use of a compact high-capacity IGBT, we were able to drastically make the size of heaters smaller.

### Solutions for our clients

The assumed customers are Japanese and overseas forging companies as well as companies that manufacture automobiles, construction machinery, bearings, agricultural machinery, and general industrial equipment and outsource their forged parts to forging companies. Since we have delivered products to numerous companies in Japan, we are very used to proposing products from the customer's perspective. Therefore, we are continuing equipment development in pursuit of greater energy-savings, and promoting equipment downsizing and price reductions.

**Uchino Co., Ltd.** <http://www.uchino-tec.co.jp/> [English](#)  
5-5-23, Minamitsumori, Nishinari-ku, Osaka City, Osaka

ISO 9001

ISO 14001



## FA machines designed for clean rooms



### Key features of the product

1. Dust-proof plant that can handle machines to be used in clean rooms
2. Large-scale plant that can handle eighth-generation glass substrates
3. Advanced technologies based on long-cultivated know-how

When creating manufacturing machines used in clean rooms, we must take various important points into account in each production process such as considering the yield in the design stage and taking thorough burr measures in the processing stage. We design and manufacture machines based on long-cultivated know-how and advanced technological capabilities.

### Solutions for our clients

We design and manufacture production machines used on production lines of plants mainly of electronics and automobile-related makers. Because we make machines via an in-house integrated production system comprised of design, machining, steel plate welding, assembling, control, and installation, we can quickly deliver products at low costs. As a company specialized in FA machines designed for clean rooms, we are fully equipped with a dust-proof plant that can handle machines to be used in clean rooms, and perform integrated production from processing to assembling in-house. We also make the utmost effort to cooperate with customer requests for reduced costs.

**ISHIKOTEC CO., LTD.** <http://www.ishikotec.co.jp/> [English](#)  
5-6-2, Mitejima, Nishiyodogawa-ku, Osaka City, Osaka

ISO 9001

ISO 14001

Good planning capability

One-of-a-kind technology

Made in Japan

Trial production possible

Mass-production possible





## "Mini-Mini Welder" ultra-miniature resistance welder



### Key features of the product

1. Ultra-miniature resistance welder exclusively used for thin film and thin welds
2. Exhibits high reliability in continuous and variable welding.
3. Simple and safe operation that does not require skills to operate

Since their release onto the market in 1987, our welders have been used at work sites where minute and accurate metal processing is required. In recent years, our welders have been used not only in medical fields to make stents used in cardiovascular operations and dental laboratory techniques, but also in state-of-the-art manufacturing such as to make solar cell circuits.

### Solutions for our clients

Since our welders can be used for micron-order welding, which is considered extremely difficult, they have been used in development and research laboratories of various companies and physics and chemistry research laboratories of universities. Moreover, our welders have been used by medical instruments makers that require minute metalworking as well as makers of gas appliances, electronic equipment and auto parts. Since the energization pulse is extremely short and welded parts can be small and finished beautifully, our welders allow users to perform temporary welding on accessories, etc.

USUTANI DENSHI Co., Ltd.

<http://www.usutani.co.jp> [English](#)  
7-28, Shoji-cho, Kadoma City, Osaka



## High-quality springs handmade by skilled professionals



### Key features of the product

1. Handmade by skilled professionals
2. Pursuing high quality and high accuracy.
3. Can manufacture diversified products in small lots.

We provide high-quality, high-precision springs made by experienced specialists. We manufacture diversified products in small lots ranging from microscopic springs not more than 1 millimeter in wire size to supersized springs of more than 90 millimeters in wire size and 400 kilograms in weight. We also provide products made of special steel with good heat and corrosion resistance.

### Solutions for our clients

We can meet various kinds of requests from companies and research institutes that are seeking special springs. We can provide springs that are optimal for various applications. We can even realize high-precision springs that are difficult to make using machines owing to the experience and techniques of seasoned professionals. By adding quality and an environmental management system, we have enhanced our production and quality control efforts and conduct our manufacturing activities with consideration for the environment. In the future, we will also emphasize growth fields such as the environment and medical treatment, as well as the aerospace industry and energy, and make a contribution as a research and development company.

Koei Spring Industry Co., Ltd.

<http://www.koei-spr.co.jp/> [English](#)  
1-50-14, Kashima, Yodogawa-ku, Osaka City, Osaka

ISO 9001  
ISO 14001



## Pulse-free metering pump (Pertinent for injecting liquefied carbon dioxide)



### Key features of the product

1. Super-precise pulse-free metering pump
2. Flow volume reproducibility is deviation 0.1% or less.
3. Allows high-pressure transfer of liquid gas and hardening liquids.

This metering pump has the world's best discharge accuracy and delivers constant rate pumping at all times.  
<Features> (1) Can pump hardening and gelling liquids such as isocyanate to extruders.  
(2) Can accurately pump liquid gases such as liquefied carbon dioxide to high-pressure section.  
(3) Most suitable for accurate coating of films and shells

### Solutions for our clients

(1) Filling to an extruder: Unlike a gear pump, there is no change in discharge flow rate caused by pressure fluctuations, so this product can fill a stable flow rate.  
(2) Accurate transfer of liquid gas: Due to its pulse-free and constant-flow features, this product can accurately fill liquid gas for a long time. Because of the use of special axis sealing, there is minimal leaking.  
(3) Precision coating: Due to its pulse-free feature, it always allows coating to a uniform thickness. Moreover, it will not be affected by pressure changes caused by the clogging of precision filters.

FUJI TECHNO  
INDUSTRIES CORPORATION

<http://www.fuji-techno.co.jp/> [English](#) / [中文](#) / [한국어](#)  
2-29-5, Kasuganishimachi, Hirakata City, Osaka

ISO 9001



## Stable low amp arc wire spray system - EAS-WD-IL model



### Key features of the product

1. Stable operation at low amperage
2. "Push & Pull" wire feeding mechanism
3. Inverter-controlled power source

This model, which was developed by a Japanese spray system maker, is most suitable for ultra-thin zinc spraying of condenser tubes for car air conditioners. Our products hold the top share of the market in Japan. Overseas, we have delivered numerous products to automotive heat exchanger parts manufacturers in South Korea, China, Thailand, the U.S. and other countries.

### Solutions for our clients

The assumed customers are makers of heat exchanger parts for automobile air conditioners and makers of heat exchanger parts for the outdoor unit of air conditioners.  
As this spray system provides a synchronized spray control that enables coating according to tube extruder speed, uniform fine coating is possible, which is expected to improve the quality of tubes. We have also established a system for simultaneous interlocked spraying of 4 to 8 extruded tubes and thus can largely contribute to the improvement of production efficiency. The system is most suitable for spraying condenser tubes of car air conditioners.

Coaken Techno Co., Ltd.

[http://www.coaken-techno.co.jp](http://www.coaken-techno.co.jp/) [English](#)  
5-2, Chikkohamaderanishimachi, Nishi-ku, Sakai City, Osaka

Good planning capability One-of-a-kind technology Made in Japan Trial production possible Mass-production possible

CONTACT: Osaka Core Manufacturing Technology Network (Detailed information: P13) E-mail : monob2b@mydome.jp



## Continuous type centrifuge for deoiling cutting waste



### Key features of the product

1. Recovery and reuse of expensive cutting oil
2. Continuous type of high throughput
3. Simple structure and easy maintenance checks

As the pioneer of centrifuges for deoiling, we manufacture products based on technologies and results that we have accumulated over many years. We can recover expensive cutting oil and make it reusable. Moreover, when treating cutting waste, our products can restrain the generation of hazardous smoke, and thus can be called "environmental pollution preventing machines."

### Solutions for our clients

Most automakers in Japan use our products and we are proud of our extensive delivery record. We can adjust machine sizes and operations in accordance with throughput and treated products. Our products can deoil cutting waste by centrifugal force, and the oil recovery rate reaches about 90%. To prevent vibrations that frequently occur in rotary machines, we have introduced a three column suspension that enables smooth operation by sufficiently absorbing vibrations, which makes automation easy. Moreover, this centrifuges is unlike conventional products, it has no consumable and maintenance is quick and easy because our products are directly installed Special electric motors.

**MATSUMOTO MACHINE MFG. CO., LTD.** <http://www.mark3.co.jp/> [English](#)  
2-5-1, Kinryo-cho, Sakai-ku, Sakai City, Osaka

ISO 9001



## Rice flour milling technology



### Key features of the product

1. Softening treatment technology that does not destroy starch cells of rice
2. Technology for adjusting milled particle size
3. Technology for developing new products for rice flour breads and noodles

The important trick of milling rice is not to destroy starch cells contained largely in rice. When milling rice, if a force is applied to the rice itself, the starch cells are destroyed. Therefore, we have developed technology that softens starch cells. Rice can be milled by softening treatment without destroying the starch cells.

### Solutions for our clients

The assumed customers are as follows.

- Agricultural societies, companies specialized in flour milling and food processing companies in countries where rice is produced as a staple food
- Food processing companies that produce allergenic foods such as wheat

The problems that can be solved are as follows.

- Improve rice flour milling technology in Southeast Asia. Improve productivity.
- Propose conventional rice confectionaries and new rice-processed foods such as rice flour breads and noodles.

**Nishimura Machine Works Co., Ltd.** <http://www.econmw.co.jp/> [English](#)  
2-6-9, Matsuyama-cho, Yao City, Osaka



## "Soil" pipe heaters



### Key features of the product

1. Uniform heat dissipation based on a small heat source
2. Reduce fuel costs and CO<sub>2</sub> emissions.
3. No complicated construction work is necessary

These pipe heaters transfer latent heat resulting from evaporation and condensation of operating fluid encapsulated in an airtight container. These pipe heaters can transport a large amount of heat by small temperature difference utilizing the movement of latent heat resulting. In contrast to conventional hot-water supply type heaters, our pipe heaters are electric heating systems of simple structure.

### Solutions for our clients

The CO<sub>2</sub> emissions from our pipe heaters is about one-fifth compared with other heating sources such as fuel oil and kerosene. Moreover, in cold regions, the pipe heaters enable users to cultivate crops throughout the year by maintaining the soil temperature at 20°C ± 5°C. By just setting an appropriate temperature, supplying electric power, users can eliminate disease-causing bacteria in soil, harmful insects and weeds. Moreover, because no hazardous pesticides are sprayed, the pipe heaters cause no residual toxicity for crops or groundwater and no adverse effects on nearby crops.

**YAMARI INDUSTRIES, LIMITED** <http://www.yamari.co.jp/> [English](#)  
1-5-4, Mishimae, Takatsuki City, Osaka

ISO 9001

ISO 14001



## "Swing Master SWM" swing-type level switch



### Key features of the product

1. An electric circuit that functions as the drive unit guarantees a long service-life.
2. It can measure low-density powder with high sensitivity.
3. Sealing by a partition wall gives good pressure resistance.

Based on the technological capabilities that we have cultivated in powder measurement over 40 years, we have developed a drive section made of an electronic circuit without using mechanical consumables such as a motor or clutch. Thus, the level switches enable driving by electromagnetic force via the partition wall. The swing type level switches three times durable as conventional rotary type level switches, and have been already patented.

### Solutions for our clients

The assumed customers are plants that handle powder and granular materials in the food, chemical, steel-making and electric power industries.

Under the environment where rotary type level switches are used, when powders are fluid, troubles such as chattering occur, and when the equipment frequently issues ON/OFF signals, machine parts such as motors need to be frequently replaced. With the introduction of this product, users can perform measurement even under a rigorous environment that makes detection difficult if rotary type level switches and other detection methods are used. Moreover, our products help users automate their production processes and promote labor-savings and cost reductions.

**KANSAI AUTOMATION CO., Ltd.** <http://www.kansai-automation.co.jp/> [English](#) [中文](#)  
2-14, Togano-cho, Kita-ku, Osaka City, Osaka

ISO 9001

Good planning capability

One-of-a-kind technology

Made in Japan

Trial production possible

Mass-production possible



## Batch counter for quantitative weighing systems, CU-675



### Key features of the product

1. Easily creates the a quantitative weighing system.
2. Easy setting and operation by 10-key entry
3. Protective construction that resists water droplets and dust (IP66)

This batch counter has the functions required for quantitative weighing systems used for liquids, etc. It not only has various interfaces required for opening and closing valves and pump control, but also corrective functions including overshoot adjustment, which makes reliable quantitative weighing possible.

### Solutions for our clients

The batch counter is widely used by food factories and food processing manufacturers, as well as for equipment for supplying chemicals and fuel. Constructed to resist water droplets and dust, the counter enables users to freely select the installation site. Since the large-size 10-key panel improves operability, anyone can intuitively use it. By fully making use of our advantages as a company specialized in indicators, we realized a surprising low price. With this product, users can create the quantitative weighing systems at low cost.

UINICS CO., LTD. <http://www.uinics.co.jp/> [English](#) / [中文](#)  
123-1, Kami, Nishi-ku, Sakai City, Osaka

ISO 9001  
ISO 14001



## Power consumption monitors (WATT-MONITOR WM01)



### Key features of the product

1. Centralized system device that manages electric power consumption of offices and laboratories
2. Logs and calculates electric power data.
3. Observes power consumption over a long period of time.

The centralized system device manages electric power consumption of offices and laboratories. It not only measures electric consumption, but is also capable of logging and calculating data and observing electric consumption over a long period of time. Although it is compact, the monitor can simultaneously measure the power consumption of two channels, and can be presented as an eco-product.

### Solutions for our clients

We provide consistent support from the planning and development of computer-related systems, to system design, hardware and software design, trial manufacture, commercial production, and environmental testing. We can also be contracted to develop hardware and software for computer systems in response to various kinds of requests from customers. We have the flexible thinking, advanced expertise and know-how required for customizing products, and, in particular, specialize in measurement and control.

Cyber Craft Co., Ltd. <http://www.cycraft.co.jp/> [English](#)  
5F, 20-33, Matsuya-cho, Neyagawa City, Osaka



## Fully automatic miniature hydrofoaming and flexible tube molding machines



### Key features of the product

1. Can be used for both flexible tube molding and hydroforming.
2. Uses eco-friendly high hydraulic pressure.
3. Energy-saving, compact

Based on "technology that makes use of eco-friendly high hydraulic pressure," the fully automatic machine guarantees safety and enables both flexible tube processing and mold bulging with just a single machine. In particular, the HDL-CHB-40 model enables highly accurate energy-saving molding, while the overall machine is smaller than conventional machines owing to downsized features.

### Solutions for our clients

Since mold bulging conventionally requires a large machine that produces a large mold clamping force, machines dedicated to flexible tube processing and mold bulging were separately needed. With the introduction of a special machine lock mechanism, however, a large mold clamping force becomes unnecessary, and we have succeeded in producing a machine that can handle both flexible tube processing and mold bulging all in one. Moreover, as for flexible tube processing, the use of proprietary double-structure rotatable molds has helped make molds compact and exponentially prolong their service-life.

Yamamoto Suiatu Kogyosho Co., Ltd. <http://www.hyprex.co.jp/> [English](#)  
2-8-8, Syomoto-cho, Toyonaka City, Osaka

ISO 9001



## "KUMONOS" Crack Inspection System



### Key features of the product

1. Crack measurement from a distance
2. Automatic drawing CAD figures.
3. Easy to keep track of changes in cracks

KUMONOS consists of a light wave surveying instrument and a built-in crack scale. This system enables it to remotely measure the width, length, shape and coordinates of cracks. The measurement data are automatically plotted out into CAD figures on computers. Since the use of scaffolds is not necessary, it saves costs and ensures the safety of surveyors.

### Solutions for our clients

For providing safety and efficient measurements, KUMONOS has been named by the Japanese Ministry of Land, Infrastructure, Transport as one of the most highly valued technologies. Using the conventional inspection method, it was necessary to directly measure cracks by use of a crack scale and then draw sketches of them. Using a KUMONOS, cracks can be measured without having to physically be near them. KUMONOS can accurately measure cracks from the front and oblique angles, and automatically draw CAD data, which makes it efficient in keeping track of changes in cracks over time.

Kansai Construction Survey Co., Ltd. <http://www.kankou.co.jp/> [English](#)  
2-1-15, Senbahigashi, Minoh City, Osaka

Good planning capability One-of-a-kind technology Made in Japan Trial production possible Mass-production possible

CONTACT: Osaka Core Manufacturing Technology Network (Detailed information: P13) E-mail : monob2b@mydome.jp



## Horizontal intermittent cartoning machines



### Key features of the product

1. Can make thin boxes with razor-sharp edges.
2. Quick and reliable resizing is possible.
3. Boxes can be beautifully finished by comb-like surface belt transportation.

Our main product, the horizontal intermittent cartoning machine, can produce thin boxes with razor-sharp edges. Moreover, the use of comb-like surface belt transportation ensures a consistently clean sealing finish.

### Solutions for our clients

Some 90% of our customers are pharmaceutical companies, followed by food, cosmetics, and machine parts manufacturers. We have an integrated build-to-order manufacturing system from design and development to manufacture and introduction. Therefore, we can provide flexible and detailed services that include retrofitting into existing lines and staged introduction of machines that gives priority to cost-effectiveness. Recently, we have received many requests for machines with built-in laser markers that can print barcodes, and we take great pride in our contribution to the enhancement of security and traceability.

**MIKITA MACHINERY Co., Ltd.** <http://www.mikitakikai.co.jp/English/index.html> [English](#)



## 'Robovie-R ver.3" everyday-use communication robot platform



### Key features of the product

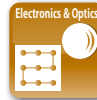
1. Highly capable of moving over irregular surfaces
2. The cost of drive mechanism was reduced while maintaining power.
3. Enables communication with various sensors and portable terminals.

Robovie-R3 was developed for a robot-based platform for the research of communication between humans and robots. Robovie-R3 is oriented for demonstration experiments of various robot services that will be conducted along shopping streets and stations.

### Solutions for our clients

Robovie-R3 is a product designed for researchers who research communication between robots and humans, and developers of robot services. We have realized unparalleled low prices for robots that can move over heights of 1m. Because the robot platform is equipped with functions required for providing various kinds of services, such as shopping and showing the way, users can reduce hardware development costs. With the built-in notebook PC that can run Windows software, the robots can communicate with various sensors and existing products including mobile phones, and thus have high versatility and can be used for extensive service development.

**Vstone Co., Ltd.** <http://www.vstone.co.jp> [English](#)  
2-15-28, Mitejima, Nishiyodogawa-ku, Osaka City, Osaka



## Dual modulation spectrum system



### Key features of the product

1. Two-way communication system for R/C hobbies
2. Strong radio and noise interference resistance and good communication performance
3. Stable transmission and reception for machines 1 km away.

The development of hobby radio communications has been centered on products on the 2.4 GHz bandwidth, while radio and noise interference resistance has improved exponentially. We have adopted a diversity antenna system of strong directionality so that communications on the 2.4 GHz band are ensured. The transmitter of our system can receive information from a flying machine 1km away and display it on the unit.

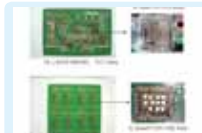
### Solutions for our clients

Our main customers are in the R/C hobby markets. The development of radio communication technology is based, however, on other technologies such communication technology, resin molding design and metal cutting design, motor control technology and attitude control technology, which can be used for various other purposes. Therefore, we can respond to requests from other business category for the development for special products. We have our own plants in Japan and Malaysia, and provide total services from product manufacture to packaging. We have developed an extensive overseas network with sales agents in the U.S., Europe and Asia.

**JAPAN REMOTE CONTROL CO., LTD.** <http://www.jrpropo.co.jp/> [English](#) / [中文](#)  
2-2-12, Eiwa, Higashiosaka City, Osaka



## High-quality, low-cost printed circuit boards



### Key features of the product

1. Pattern design that reduces product costs
2. Proposal of new base materials according to product applications
3. Quick delivery after processing from trial manufacture to commercial production of lots

Since we handle both pattern design and board production by taking the process procedure and manufacturing specs into consideration, we can provide low-cost, high-quality products. Moreover, given the diversity of applications and operating conditions of printed circuit boards, we can propose a selection of better base materials.

### Solutions for our clients

Since our boards are mainly used as customized parts in electronic products, we have electronic product makers as our customers. We make individual wiring boards for each product. Therefore, to develop a single product, we perform all processes in-house from design and trial manufacture to board manufacture and product launch. Thus, we can quickly deliver low-cost high quality products.

**MURAKAMI ELECTRIC IND. CO., LTD.** <http://www.murakami-elec.co.jp> [English](#)  
2-4-20, Kamihigashi, Hirano-ku, Osaka City, Osaka

Good planning capability One-of-a-kind technology Made in Japan Trial production possible Mass-production possible

**CONTACT: Osaka Core Manufacturing Technology Network (Detailed information: P13) E-mail : monob2b@mydome.jp**