

## Drying Service

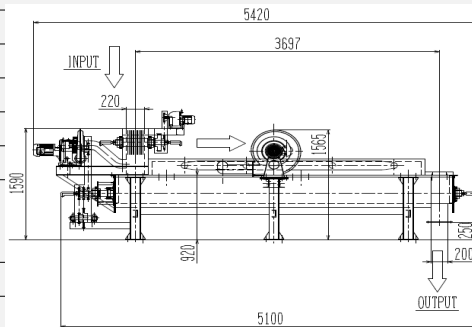
We provide drying service for industrial slurry and sludge



\* All service will be charged. Please contact us about details.

## Specification

MODEL*1	KS4-1
SIZE	5100(W)×1200(H)×1550(D)mm
WEIGHT	2800kg
MATERIAL	SUS304
POWER	4.5kW/h
TARGET	Chemical, Pigment, Iron powder, Aluminium, Pulp, Cellulose, Sewage, Food sludge, etc
STEAM	120 kg/h
CAPACITY*2,3	100 kg/h



\*1 Drying processing capacity is different by model number.

\*2 In case of drying material of water content 60% under steam pressure 0.5Mpa.

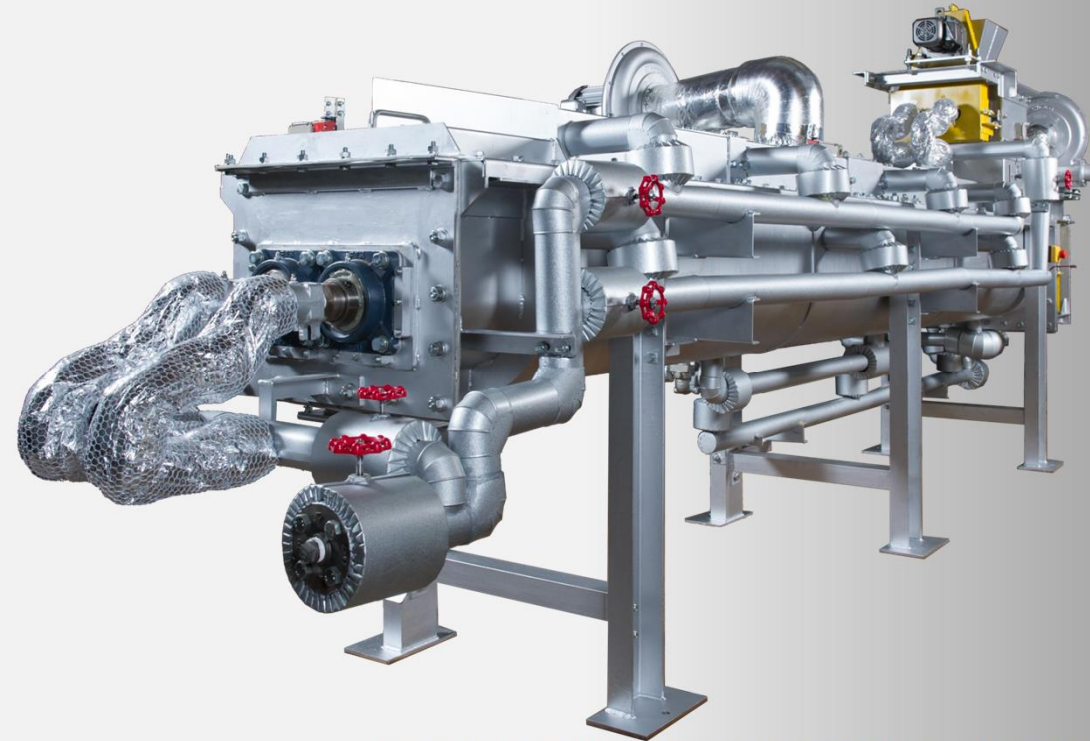
\*3 The drying capacity depends on the type of material and material water content.

**KENKI Corporation**

Kami-muta 3-9-7, Hakata ward, Fukuoka city,  
812-0006, Japan  
TEL: +81-92-411-1203  
FAX: +81-92-411-1259  
E-mail: info@kenmori.com  
URL: <http://www.kenmori.biz/>

● This catalogue was updated on November 2013.

**SHTS**  
Steam Heated Twin Screw Technology  
Low Temperature Drying Equipment



**High Efficiency**  
24-hour non-stop working

**Low Temperature**  
No component change

**No adhesion**  
No adhesion & No clogging

**Low Temperature Drying Equipment for Industrial Slurry & Sludge**

**KENKI Corporation**

# SHTS Low Temperature Drying Equipment

Steam Heated Twin Screw Technology

